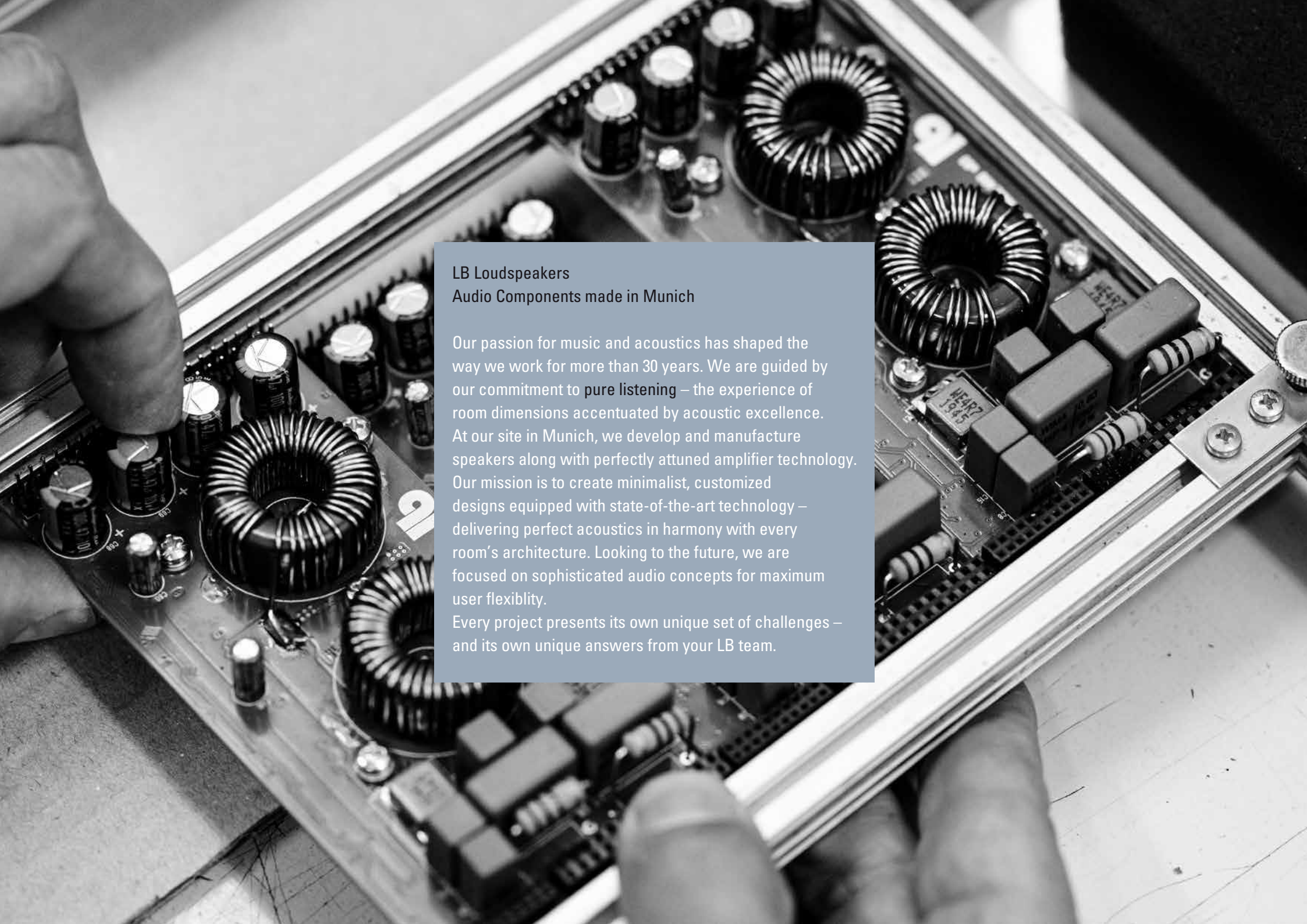




Lautsprecher und
Beschallungstechnik

PRODUCTS

2022 | 23

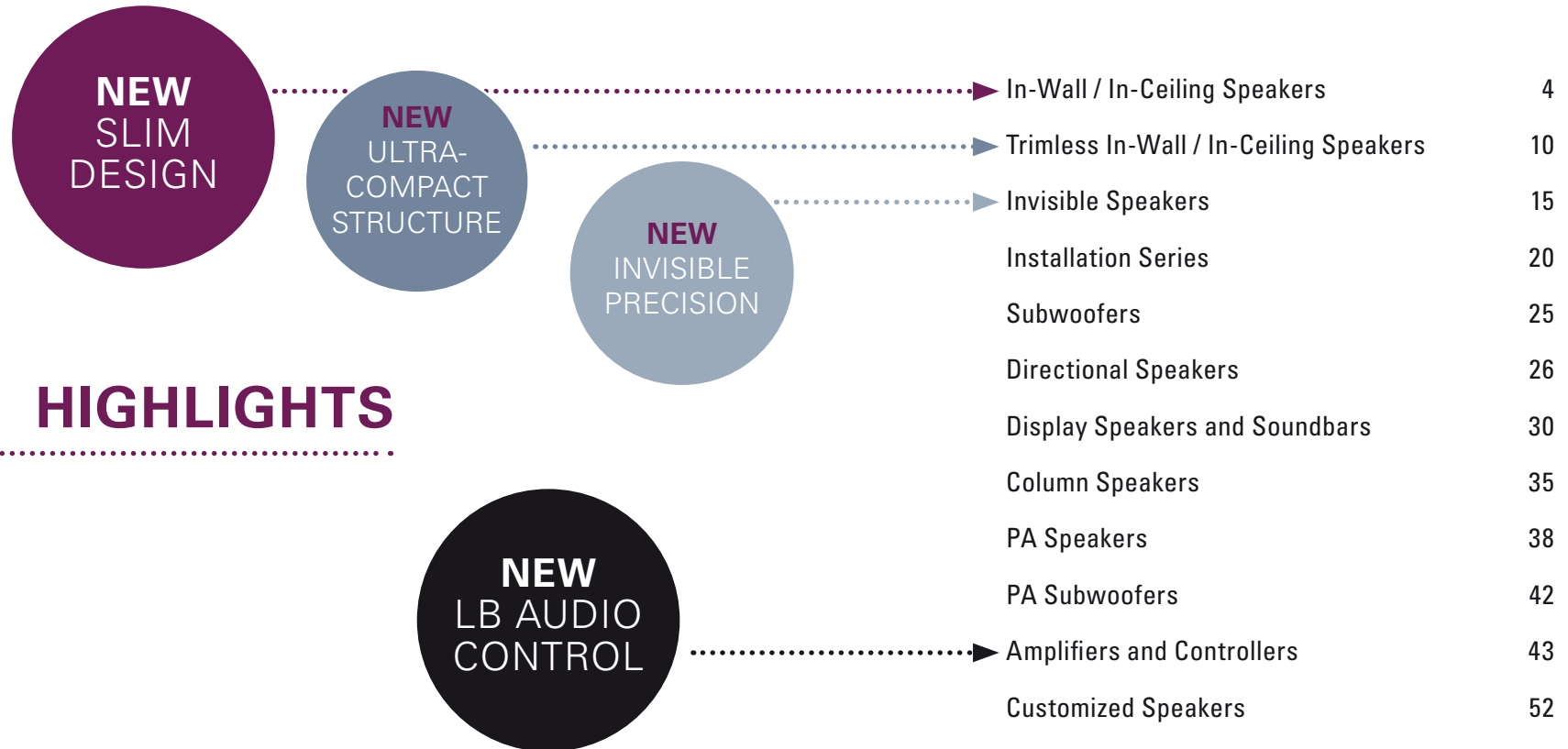


LB Loudspeakers
Audio Components made in Munich

Our passion for music and acoustics has shaped the way we work for more than 30 years. We are guided by our commitment to **pure listening** – the experience of room dimensions accentuated by acoustic excellence. At our site in Munich, we develop and manufacture speakers along with perfectly attuned amplifier technology. Our mission is to create minimalist, customized designs equipped with state-of-the-art technology – delivering perfect acoustics in harmony with every room's architecture. Looking to the future, we are focused on sophisticated audio concepts for maximum user flexibility.

Every project presents its own unique set of challenges – and its own unique answers from your LB team.

PRODUCTS 2022 | 23



HIGHLIGHTS



IN-WALL / IN-CEILING SPEAKERS

NEXT GENERATION Our latest **DE series** sets new standards in high-end, in-wall/in-ceiling sound systems and feature an elegant and slim installation frame. Compact dimensions and perfect acoustics are just some of the highlights of this new series. The installation height of the sophisticated steel installation frame of our round, square, and rectangular models is just 1.2 mm while the ultra-compact design means that only a minimum amount of installation space is required in ceilings and walls. Thanks to the modular concept comprising an installation frame, speaker unit, and magnetic front grille, the speakers can be installed flexibly and securely in any type of ceiling or wall.

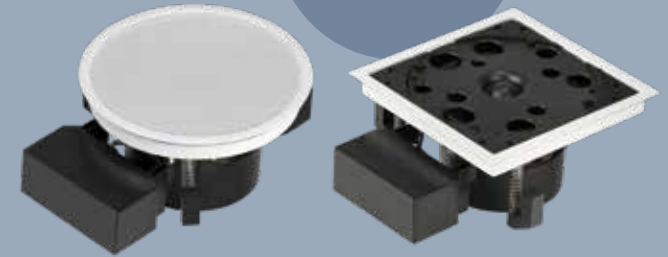
Depending on requirements and room/situation, the various models in the DE series can be combined to create impressive and visually harmonious sound systems.

The models with optimized Polar® technology are designed for exceptionally consistent sound transmission from the in-ceiling sound system, even with just a few speakers. They offer a dispersion angle of 180°.

The models in the CD and FR series feature targeted dispersion and are especially suitable as front speakers in AV systems and conference spaces.

- **Elegant steel frames**
- **Installation height of just 1.2 mm**
- **Flexible assembly with clamps**
- **A variety of dispersion characteristics**
- **Optimized Polar® technology**

NEW
ULTRA-COMPACT
STRUCTURE



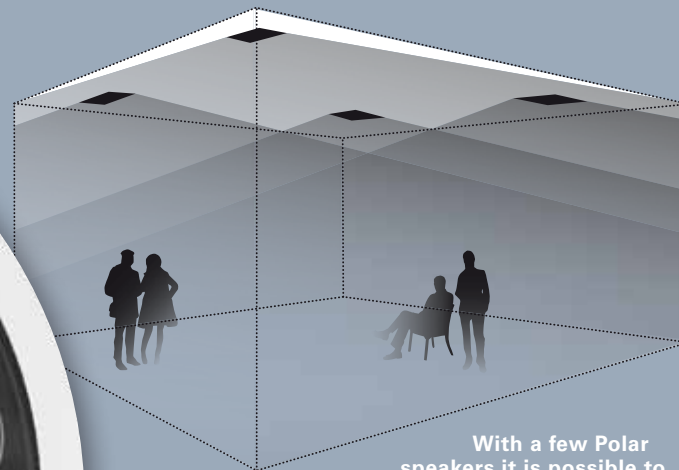
DE 300 FR In-Ceiling Front Speakers with Beam Direction -35° downwards



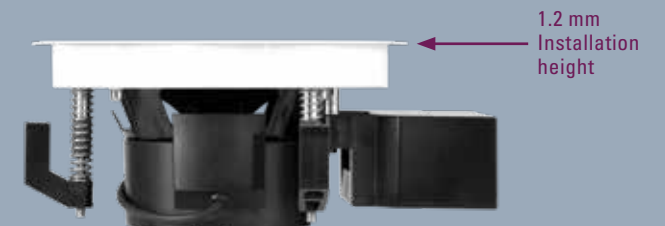
Clientis Bank Oberuzwil CH
In-ceiling sound system with DE Series speakers

To ensure natural reproduction and perfect acoustic dispersion, we have further optimized our new generation of patented coaxial drivers that feature **Polar® technology**.

NEW
SLIM
DESIGN



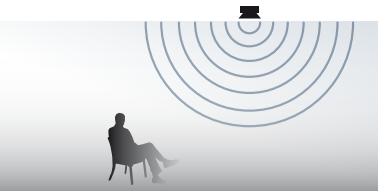
With a few Polar speakers it is possible to homogeneously fill a room with sound.



Small In-Wall / In-Ceiling Speakers



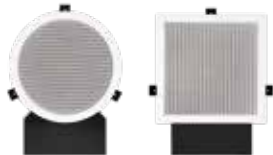
		Model	Item no.
DE 100	High-quality miniature full-range speaker with electronic equalization. Power capacity RMS/program 20/40 watts, impedance 8 ohms Overall diameter 102 mm, cutout diameter 96 mm, mounting depth 55 mm	DE 100 White	0101-0001
		DE 100 Black	0101-0009
DE 100 T	100 V version, power 2.5/5/10 watts	DE 100 T White DE 100 T Black	0101-0003 0101-0010
DE 100 Q	Square, otherwise like DE 100 Dimensions 102 × 102 mm, cutout size 96 × 96 mm, mounting depth 55 mm	DE 100 Q White	0101-0005
		DE 100 Q Black	0101-0011
DE 100 QT	Square, 100 V version, power 2.5/5/10 watts	DE 100 QT White	0101-0006
		DE 100 QT Black	0101-0012



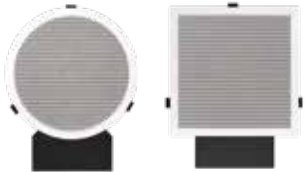
Polar® Speakers Uncompromising two-way speakers with patented Polar® technology for extremely broad and even sound dispersion (180°). With Polar speakers it is possible to homogeneously fill rooms with sound employing considerably fewer systems and greater speaker distances.



NEW Polar In-Ceiling Speakers with 180° Dispersion Angle

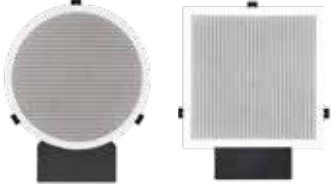





DE 140 Polar	2-way hifi in-ceiling speaker with Polar technology Power capacity RMS/program 30 / 60 watts, 8 ohms Overall diameter 144 mm, cutout diameter 128 mm, mounting depth 83 mm	DE 140 Polar White	0102-0013
		DE 140 Polar Black	0102-0009
DE 140 T Polar	100 V version, power 7.5/15/30 watts	DE 140 T Polar White DE 140 T Polar Black	0102-0014 0102-0010
DE 140 Q Polar	Square, otherwise like DE 140 Polar Dimensions 144 × 144 mm, cutout size 128 × 128 mm, mounting depth 83 mm	DE 140 Q Polar White	0102-0015
		DE 140 Q Polar Black	0102-0011
DE 140 QT Polar	Square, 100 V version, power 7.5/15/30 watts	DE 140 QT Polar White	0102-0016
		DE 140 QT Polar Black	0102-0012

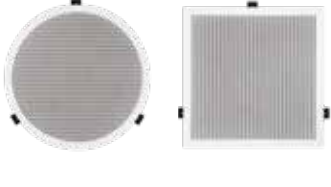



DE 170 Polar	2-way hifi in-ceiling speaker with Polar technology Power capacity RMS/program 40 / 80 watts, 8 ohms Overall diameter 174 mm, cutout diameter 158 mm, mounting depth 88 mm	DE 170 Polar White	0103-0013
		DE 170 Polar Black	0103-0009
DE 170 T Polar	100 V version, power 7.5/15/30 watts	DE 170 T Polar White DE 170 T Polar Black	0103-0014 0103-0010
DE 170 Q Polar	Square, otherwise like DE 170 Polar Dimensions 174 × 174 mm, cutout size 158 × 158 mm, mounting depth 88 mm	DE 170 Q Polar White	0103-0015
		DE 170 Q Polar Black	0103-0011
DE 170 QT Polar	Square, 100 V version, power 7.5/15/30 watts	DE 170 QT Polar White	0103-0016
		DE 170 QT Polar Black	0103-0012

NEW Polar In-Ceiling Speakers with 180° Dispersion Angle

		Model	Item no.	
	DE 200 Polar	2-way hifi in-ceiling speaker with Polar technology Power capacity RMS/program 60/120 watts, 8 ohms, overall diameter 192 mm Cutout diameter 176 mm, mounting depth 100 mm	DE 200 Polar White DE 200 Polar Black	0104-0053 0104-0037
	DE 200 T Polar	100 V version, power 7.5/15/30 watts	DE 200 T Polar White DE 200 T Polar Black	0104-0054 0104-0038
	DE 200 Q Polar	Square, otherwise like DE 200 Polar Dimensions 192 x 192 mm, cutout size 176 x 176 mm, mounting depth 100 mm	DE 200 Q Polar White DE 200 Q Polar Black	0104-0055 0104-0039
	DE 200 QT Polar	Square, 100 V version, power 7.5/15/30 watts	DE 200 QT Polar White DE 200 QT Polar Black	0104-0056 0104-0040
	DE 200 HSP Polar	2-way in-ceiling speaker with Polar technology and high sound pressure Power capacity RMS/program 60 / 120 watts, 8 ohms Overall diameter 192 mm, cutout diameter 176 mm, mounting depth 102 mm	DE 200 HSP Polar White DE 200 HSP Polar Black	0104-0057 0104-0041
	DE 200 HSPT Polar	100 V version, power 7.5/15/30 watts	DE 200 HSPT Polar White DE 200 HSPT Polar Black	0104-0058 0104-0042
	DE 200 HSPQ Polar	Square, otherwise like DE 200 HSP Polar Dimensions 192 x 192 mm, cutout size 176 x 176 mm, mounting depth 102 mm	DE 200 HSPQ Polar White DE 200 HSPQ Polar Black	0104-0059 0104-0043
	DE 200 HSPQT Polar	Square, 100 V version, power 7.5/15/30 watts	DE 200 HSPQT Polar White DE 200 HSPQT Polar Black	0104-0060 0104-0044
	DE 300 R Polar	3-way in-ceiling speaker with Polar technology Power capacity RMS/program 120/240 watts, 4 ohms Dimensions 358 x 192 mm, cutout size 342 x 176 mm, mounting depth 100 mm	DE 300 R Polar White DE 300 R Polar Black	0105-0001 0105-0009

In-Ceiling Speakers with Reduced Mounting Depth

	DE 200 LP	2-way system with reduced mounting depth Power capacity RMS/program 40 / 80 watts, 8 ohms Overall diameter 192 mm, cutout diameter 176 mm, mounting depth 48 mm	DE 200 LP White DE 200 LP Black	0104-0065 0104-0049
	DE 200 LPT	100 V version, power 7.5/15/30 watts	DE 200 LPT White DE 200 LPT Black	0104-0066 0104-0050
	DE 200 LPQ	Square, otherwise like DE 200 LP Dimensions 192 x 192 mm, cutout size 176 x 176 mm, mounting depth 48 mm	DE 200 LPQ White DE 200 LPQ Black	0104-0067 0104-0051
	DE 200 LPQT	Square, 100 V version, power 7.5/15/30 watts	DE 200 LPQT White DE 200 LPQT Black	0104-0068 0104-0052



The models **DE 200 CD** and **DE 300 CDR** are high-performance two-way in-wall speakers with a defined dispersion angle of 80°. They are employed as front speakers (L, R, center) for home-audio systems and media rooms. A tweeter with waveguide ensures controlled sound radiation with CD characteristics (Constant Directivity).

NEW In-Wall Speakers with Narrow Dispersion Angle (80°)



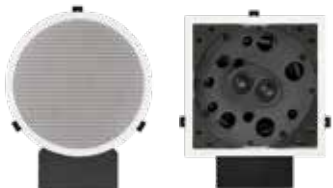
		Model	Item no.
DE 200 CD	In-Wall Speaker 80° dispersion angle, power capacity RMS/program 60/120 watts, 8 ohms Overall diameter 192 mm, cutout diameter 176 mm, mounting depth 100 mm	DE 200 CD White	0104-0061
		DE 200 CD Black	0104-0045
DE 200 CDQ	Square, otherwise like DE 200 CD Dimensions 192 × 192 mm, cutout size 176 × 176 mm, mounting depth 100 mm	DE 200 CDQ White	0104-0062
		DE 200 CDQ Black	0104-0046
<hr/>			
DE 300 CDR	3-way in-wall speaker with CD characteristics 80° dispersion angle, power capacity RMS/program 120/240 watts, 4 ohms Dimensions 358 × 192 mm, cutout size 342 × 176 mm, mounting depth 100 mm	DE 300 CDR White	0105-0003
		DE 300 CDR Black	0105-0010

The model **DE 300 FR** is a powerful front speaker for in-ceiling installation which radiates 35° downwards. It was specially developed for employment as front speaker (L, R, center) without impairing the field of view in home-cinema applications and media rooms.

In-Ceiling Front Speakers

DE 300 FR	3-way in-ceiling front speaker, beam direction-35° downwards Power capacity RMS/program 80/160 watts, 4 ohms Dimensions 358 × 192 mm, cutout size 342 × 176 mm, mounting depth 150 mm	DE 300 FR White	0105-0005
		DE 300 FR Black	0105-0011





NEW In-Ceiling Stereo Speakers

SLIM
DESIGN

- DE 200 ST Polar** Stereo 2-way in-ceiling speaker with Polar technology
Power capacity RMS/program 2 × 40 / 80 watts
Impedance 2 × 8 ohms, overall diameter 192 mm
Cutout diameter 176 mm, mounting depth 100 mm
- DE 200 STQ Polar** Square, otherwise like DE 200 ST Polar
Dimensions 192 × 192 mm, cutout size 176 × 176 mm
Mounting depth 100 mm

Model

Item no.

- DE 200 ST Polar White** 0104-0063
DE 200 ST Polar Black 0104-0047
- DE 200 STQ Polar White** 0104-0064
DE 200 STQ Polar Black 0104-0048



NEW In-Ceiling Subwoofers

- DE 300 SUB** In-ceiling subwoofer with integrated crossover
Power capacity RMS/program 120 / 240 watts
Impedance 4 ohms, dimensions 358 × 192 mm
Cutout size 342 × 176 mm, mounting depth 100 mm

Only for use with our back boxes EG 300 or EGB 300

- DE 300 SUB White** 0105-0013
DE 300 SUB Black 0105-0012



Accessories

DE-X-Tool Magnetic holder for effortless removal of the DE and DE-X grille

Model

DE-X-Tool

Item no.

0360-0001

Back Boxes for DE and DE-X

EG 100	Back box for DE 100, synthetic material, dimensions 200 × 200 × 100 mm	EG 100	2101-0001
EG 140	Back box for DE 140 and DE-X 140, synthetic material, dimensions 250 × 250 × 100 mm	EG 140	2201-0001
EG 140 Q	Back box for DE 140 Q and DE-X 140 Q, synthetic material, dimensions 250 × 250 × 100 mm	EG 140 Q	2202-0001
EG 170	Back box for DE 170 and DE-X 170, synthetic material, dimensions 300 × 250 × 120 mm	EG 170	2218-0001
EG 170 Q	Back box for DE 170 Q and DE-X 170 Q, synthetic material, dimensions 300 × 250 × 120 mm	EG 170 Q	2219-0001
EG 200	Back box for DE 200 and DE-X 200, synthetic material, dimensions 350 × 300 × 120 mm	EG 200	2203-0001
EG 200 Q	Back box for DE 200 Q and DE-X 200 Q, synthetic material, dimensions 350 × 300 × 120 mm	EG 200 Q	2204-0001
EG 300	Back box for DE 300 R Polar, CDR, SUB and DE-X 300 R Polar, CDR, SUB Synthetic material, dimensions 500 × 350 × 140 mm	EG 300	2205-0001
EG 300 FR	Back box for DE 300 FR and DE-X 300 FR Synthetic material, dimensions 500 × 350 × 180 mm	EG 300 FR	2206-0001

Back Boxes for DE and DE-X for Concrete Ceilings



EGB 140	Back box for concrete ceilings for DE 140 and DE-X 140 Synthetic material, dimensions 250 × 250 × 128 mm, incl. rigid foam spacer	EGB 140	2207-0001
EGB 140 Q	Back box for concrete ceilings for DE 140 Q and DE-X 140 Q Synthetic material, dimensions 250 × 250 × 128 mm, incl. rigid foam spacer	EGB 140 Q	2208-0001
EGB 170	Back box for concrete ceilings for DE 170 and DE-X 170 Synthetic material, dimensions 300 × 250 × 148 mm, incl. rigid foam spacer	EGB 170	2220-0001
EGB 170 Q	Back box for concrete ceilings for DE 170 Q and DE-X 170 Q Synthetic material, dimensions 300 × 250 × 148 mm, incl. rigid foam spacer	EGB 170 Q	2221-0001
EGB 200	Back box for concrete ceilings for DE 200 and DE-X 200 Synthetic material, dimensions 350 × 300 × 148 mm, incl. rigid foam spacer	EGB 200	2209-0001
EGB 200 Q	Back box for concrete ceilings for DE 200 Q and DE-X 200 Q Synthetic material, dimensions 350 × 300 × 148 mm, incl. rigid foam spacer	EGB 200 Q	2210-0001
EGB 300	Back box for concrete ceilings for DE 300 R Polar, CDR, SUB and DE-X 300 R Polar, CDR, SUB Synthetic material, dimensions 500 × 350 × 168 mm, incl. rigid foam spacer	EGB 300	2211-0001
EGB 300 FR	Back box for concrete ceilings for DE 300 FR and DE-X 300 FR Synthetic material, dimensions 500 × 350 × 208 mm, incl. rigid foam spacer	EGB 300 FR	2212-0001



TRIMLESS IN-WALL/ IN-CEILING SPEAKERS

Our trimless speakers of the **DE-X series** are high-end speakers for flush mounting in ceilings and walls.

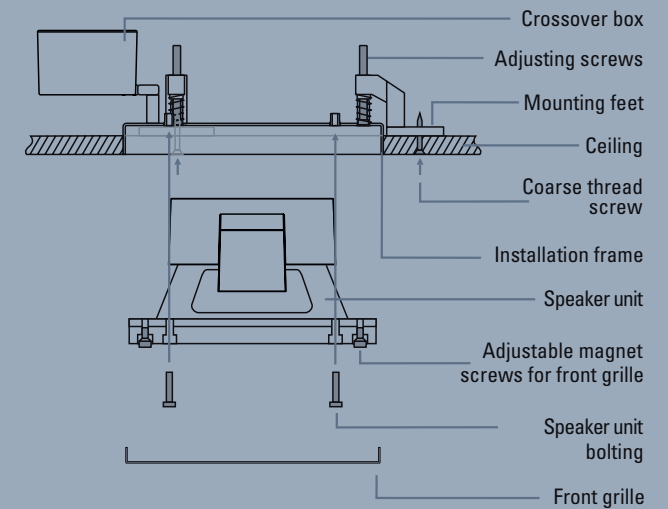
The minimalist appearance and compact dimensions of the round, square, and rectangular models of the DE-X series allow sound concepts of outstanding audio quality to be implemented with minimum intrusion in indoor spaces that feature a sophisticated interior design.

Depending on requirements and on room/situation, the various speaker models in the DE X series can be combined to create impressive and visually harmonious sound systems.

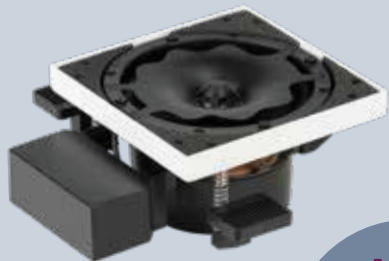
The models with optimized Polar® technology are designed for exceptionally consistent sound transmission from the in-ceiling sound system, even with just a few speakers. They offer a dispersion angle of 180°.

The models in the CD and FR series feature targeted dispersion and are especially suitable as front speakers in AV systems and conference spaces.

- **Trimless with flush mounting**
- **Minimal dimensions**
- **Ultra-compact structure**
- **Maximum flexibility during installation**
- **A variety of dispersion characteristics**
- **Optimized Polar® technology**



The speakers of the DE-X Series are flush mounted in walls and ceilings. After installation only the flush-mounted front grilles are visible.



NEW
ULTRA-
COMPACT
STRUCTURE

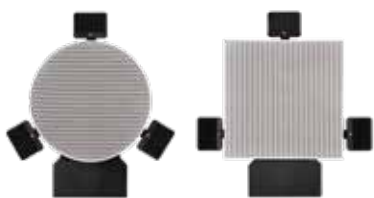
Different designs and dispersion characteristics give you the scope you need when planning ambitious sound concepts.

Penthouse Austria
Invisible multi-room
sound system with
trimless speakers
outdoors





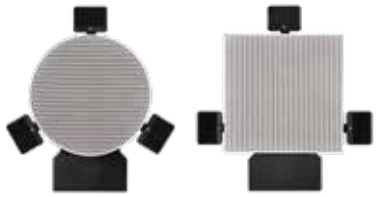
Polar® Speakers Uncompromising two-way speakers with patented Polar® technology for extremely broad and even sound dispersion (180°). With Polar speakers it is possible to homogenously fill rooms with sound employing considerably fewer systems and greater speaker distances.



NEW Trimless Polar In-Ceiling Speakers with 180° Dispersion

		Model	Item no.
DE-X 140 Polar	Trimless 2-way hifi in-ceiling speaker with Polar technology Power capacity RMS/program 30 / 60 watts, 8 ohms Overall diameter (grille) 122 mm, cutout diameter 128 mm, mounting depth 84 mm	DE-X 140 Polar White	0320-0001
DE-X 140 T Polar	100 V version, power 7.5/15/30 watts	DE-X 140 T Polar White	0320-0002
DE-X 140 Q Polar	Square, otherwise like DE-X 140 Polar Grille 122 x 122 mm, cutout size 128 x 128 mm, mounting depth 84 mm	DE-X 140 Q Polar White	0320-0003
DE-X 140 QT Polar	Square, 100 V version, power 7.5/15/30 watts	DE-X 140 QT Polar White	0320-0004
DE-X 170 Polar	2-way hifi in-ceiling speaker with Polar technology Power capacity RMS/program 40 / 80 watts, 8 ohms Overall diameter (grille) 152 mm, cutout diameter 158 mm, mounting depth 88 mm	DE-X 170 Polar White	0330-0001
DE-X 170 T Polar	100 V version, power 7.5/15/30 watts	DE-X 170 T Polar White	0330-0002
DE-X 170 Q Polar	Square, otherwise like DE-X 170 Polar Grille 152 x 152 mm, cutout size 158 x 158 mm, mounting depth 88 mm	DE-X 170 Q Polar White	0330-0003
DE-X 170 QT Polar	Square, 100 V version, power 7.5/15/30 watts	DE-X 170 QT Polar White	0330-0004
DE-X 200 Polar	Trimless 2-way hifi in-ceiling speaker with Polar technology Power capacity RMS/program 60/120 watts, 8 ohms Overall diameter (grille) 170 mm, cutout diameter 176 mm, mounting depth 100 mm	DE-X 200 Polar White	0340-0001
DE-X 200 T Polar	100 V version, power 7.5/15/30 watts	DE-X 200 T Polar White	0340-0002
DE-X 200 Q Polar	Square, otherwise like DE-X 200 Polar Grille 170 x 170 mm, cutout size 176 x 176 mm, mounting depth 100 mm	DE-X 200 Q Polar White	0340-0003
DE-X 200 QT Polar	Square, 100 V version, power 7.5/15/30 watts	DE-X 200 QT Polar White	0340-0004

NEW Trimless Polar In-Ceiling Speakers with 180° Dispersion



DE-X 200 HSP Polar Trimless 2-way high-end in-ceiling speaker with Polar technology and high sound pressure
Power capacity RMS/program 60/120 watts, 8 ohms
Overall diameter (grille) 170 mm, cutout diameter 176 mm, mounting depth 102 mm

Model

Item no.

DE-X 200 HSP Polar White 0340-0007

DE-X 200 HSPT Polar 100 V version, power 7.5/15/30 watts

DE-X 200 HSPT Polar White 0340-0008

DE-X 200 HSPQ Polar Square, otherwise like DE-X 200 HSP Polar
Grille 170 × 170 mm, cutout size 176 × 176 mm, mounting depth 102 mm

DE-X 200 HSPQ Polar White 0340-0009

DE-X 200 HSPQT Polar Square, 100 V version, power 7.5/15/30 watts

DE-X 200 HSPQT Polar White 0340-0010



DE-X 300 R Polar Trimless 3-way in-ceiling speaker with Polar technology
Power capacity RMS/program 120 / 240 watts, 4 ohms
Grille 336 × 170 mm, cutout size 342 × 176 mm, mounting depth 100 mm

DE-X 300 R Polar White 0350-0001

NEW Trimless In-Ceiling Speakers with Reduced Mounting Depth (48 mm)



DE-X 200 LP 2-way system with reduced mounting depth, power capacity RMS/program 40 / 80 watts
8 ohms, overall diameter (grille) 170 mm, cutout diameter 176 mm, mounting depth 48 mm

DE-X 200 LP White 0340-0011

DE-X 200 LPT 100 V version, power 7.5/15/30 watts

DE-X 200 LPT White 0340-0012

DE-X 200 LPQ Square, otherwise like DE-X 200 LP
Grille 170 × 170 mm, cutout size 176 × 176 mm, mounting depth 48 mm

DE-X 200 LPQ White 0340-0013

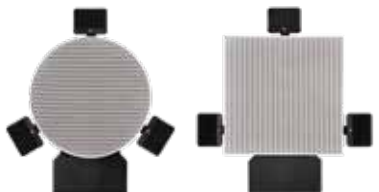
DE-X 200 LPQT Square, 100 V version, power 7.5/15/30 watts

DE-X 200 LPQT White 0340-0014



The models **DE-X 200 CD** and **DE-X 300 CDR** are trimless high-performance two-way inwall speakers with a defined dispersion angle of 80°. They are employed as front speakers (L, R, center) for home-audio systems and media rooms. A tweeter waveguide ensures controlled sound radiation with CD characteristics (Constant Directivity).

NEW Trimless In-Wall Speakers with Narrow Dispersion Angle (80°)



DE-X 200 CD Trimless 2-way in-wall speaker with CD characteristics, 80° dispersion angle
Power capacity RMS/program 60 / 120 watts, 8 ohms
Overall diameter (grille) 170 mm, cutout diameter 176 mm, mounting depth 100 mm

DE-X 200 CD White 0340-0017

DE-X 200 CDQ Square, otherwise like DE-X 200 CD
Grille 170 × 170 mm, cutout size 176 × 176 mm, mounting depth 100 mm

DE-X 200 CDQ White 0340-0018



NEW Trimless In-Wall Speakers with Narrow Dispersion Angle (80°)

DE-X 300 CDR Trimless 3-way in-wall speaker with CD characteristics, 80° dispersion angle
 Power capacity RMS/program 120/240 watts, 4 ohms
 Grille 336 × 170 mm, Cutout size 342 × 176 mm, mounting depth 100 mm

Model

Item no.

DE-X 300 CDR White

0350-0004



The model **DE-X 300 FR** is a powerful front speaker for in-ceiling installation which radiates 35° downwards. It was specially developed for employment as front speaker (L, R, center) without impairing the field of view in home-cinema applications and media rooms.



NEW Trimless In-Ceiling Front Speaker with Beam Direction 35° Downwards

DE-X 300 FR Trimless 3-way in-ceiling front speaker, beam direction-35° downwards
 Power capacity RMS/program 80 / 160 watts, 4 ohms
 Grille 336 × 170 mm, cutout size 342 × 176 mm, mounting depth 150 mm

DE-X 300 FR White

0350-0002

NEW Trimless Polar In-Ceiling Stereo Speakers

DE-X 200 ST Polar Trimless stereo-2-way in-ceiling speaker with Polar technology
 Power capacity RMS/program 2 × 40 / 80 watts, 2 × 8 ohms
 Overall diameter (grille) 170 mm, cutout diameter 176 mm, mounting depth 100 m

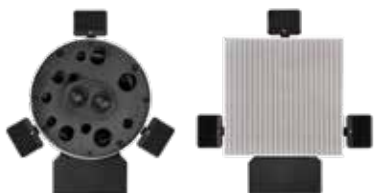
DE-X 200 ST Polar White

0340-0015

DE-X 200 STQ Polar Square, otherwise like DE-X 200 ST Polar
 Grille 170 mm, cutout size 176 × 176 mm, mounting depth 100 mm

DE-X 200 STQ Polar White

0340-0016



NEW Trimless In-Ceiling Subwoofer

DE-X 300 SUB Trimless in-ceiling subwoofer with integrated crossover
 Power capacity RMS/program 120 / 240 watts, 4 ohms
 Grille 336 × 170 mm, cutout size 342 × 176 mm, mounting depth 100 mm

DE-X 300 SUB White

0350-0003

Only for use with our back boxes EG 300 or EGB 300





Accessories

DE-X-Tool Magnetic holder for effortless removal of the DE and DE-X grille

Model

DE-X-Tool

Item no.

0360-0001

Back Boxes for DE and DE-X

EG 140 Back box for DE 140 and DE-X 140, synthetic material, dimensions 250×250×100 mm

EG 140

2201-0001

EG 140 Q Back box for DE 140 Q and DE-X 140 Q, synthetic material, dimensions 250×250×100 mm

EG 140 Q

2202-0001

EG 170 Back box for DE 170 and DE-X 170, synthetic material, dimensions 300×250×120 mm

EG 170

2218-0001

EG 170 Q Back box for DE 170 Q and DE-X 170 Q, synthetic material, dimensions 300×250×120 mm

EG 170 Q

2219-0001

EG 200 Back box for DE 200 and DE-X 200, synthetic material, dimensions 350×300×120 mm

EG 200

2203-0001

EG 200 Q Back box for DE 200 Q and DE-X 200 Q, synthetic material, dimensions 350×300×120 mm

EG 200 Q

2204-0001

EG 300 Back box for DE 300 R Polar, CDR, SUB and DE-X 300 R Polar, CDR, SUB
Synthetic material, dimensions 500×350×140 mm

EG 300

2205-0001

EG 300 FR Back box for DE 300 FR and DE-X 300 FR
Synthetic material, dimensions 500×350×180 mm

EG 300 FR

2206-0001

Back Boxes for DE and DE-X for Concrete Ceilings

EGB 140 Back box for concrete ceilings for DE 140 and DE-X 140
Synthetic material, dimensions 250×250×128 mm, incl. rigid foam spacer

EGB 140

2207-0001

EGB 140 Q Back box for concrete ceilings for DE 140 Q and DE-X 140 Q
Synthetic material, dimensions 250×250×128 mm, incl. rigid foam spacer

EGB 140 Q

2208-0001

EGB 170 Back box for concrete ceilings for DE 170 and DE-X 170
Synthetic material, dimensions 300×250×148 mm, incl. rigid foam spacer

EGB 170

2220-0001

EGB 170 Q Back box for concrete ceilings for DE 170 Q and DE-X 170 Q
Synthetic material, dimensions 300×250×148 mm, incl. rigid foam spacer

EGB 170 Q

2221-0001

EGB 200 Back box for concrete ceilings for DE 200 and DE-X 200
Synthetic material, dimensions 350×300×148 mm, incl. rigid foam spacer

EGB 200

2209-0001

EGB 200 Q Back box for concrete ceilings for DE 200 Q and DE-X 200 Q
Synthetic material, dimensions 350×300×148 mm, incl. rigid foam spacer

EGB 200 Q

2210-0001

EGB 300 Back box for concrete ceilings for DE 300 R Polar, CDR, SUB and DE-X 300 R Polar, CDR, SUB
Synthetic material, dimensions 500×350×168 mm, incl. rigid foam spacer

EGB 300

2211-0001

EGB 300 FR Back box for concrete ceilings for DE 300 FR and DE-X 300 FR
Synthetic material, dimensions 500×350×208 mm, incl. rigid foam spacer

EGB 300 FR

2212-0001



INVISIBLE SPEAKERS

PUSHING THE LIMITS Our new **DE Plan series** consolidates all of our experience since 1999 in developing invisible speakers, redefining what is technically possible with speakers of this kind. The combination of flat-membrane woofer drivers, high-frequency exciters, and the latest generation of **de:shape®** membranes means maximum linearity and sound pressure in the low frequency range. As the entire membrane surface is used for homogenous sound dispersion, the dimensions of our DE Plan series are remarkably compact. The mathematically calculated contour of the de:shape® membranes and the patented absorption elements prevents interference caused by membrane resonance for unprecedented precision in sound reproduction. Thanks to the optimized coupling between the drivers and dispersion membrane, the new models respond a lot less sensitively to deviations in covering material (plastering, lining, and paint). After installation, the speakers are completely concealed in ceilings and walls.

DEplan®

- Invisible
- Compact dimensions
- Flexible installation in all ceilings and walls
- Excellent low-frequency characteristics

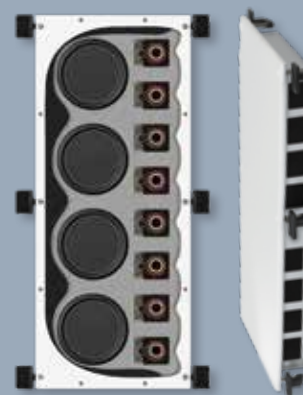


Private mansion Mallorca invisible multi-room sound system with DE Plan speakers



inveco Showroom Vienna Invisible Dolby Atmos multi-room sound system

DE PLAN SERIES CONSTRUCTION AND MOUNTING IN DRYWALLS



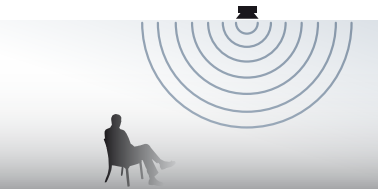
array®
adapted line array

LB AUDIO CONTROL

Browser-based Software for our new DSPs
Interface: Ethernet
Download
www.lb-lautsprecher.de

NEW INVISIBLE LINE ARRAY WITH ADJUSTABLE DISPERSION DIRECTION

The **DE Plan 800 AIArray** is an invisible 4-channel line array with an adjustable dispersion direction. It can be installed in walls or ceilings and enables sound dispersion to be adjusted to the listening zone. The system is controlled using our PA-series multichannel DSP power amplifiers and the dispersion direction is programmed using our new **LB AUDIO CONTROL Software**.



DE Plan transducers have a dispersion angle of 180°. This broad omnidirectional behavior enables rooms to be evenly filled with sound using just a few systems. The speakers can be installed in ceilings as well as in walls.

de:shape®

DEplan®



Invisible In-Wall / In-Ceiling Speakers

<p>DE Plan 200 NEW</p>	<p>2-way planar transducer with wide dispersion angle (180°) Power capacity RMS/program 60 / 120 watts, Impedance 8 ohms Dimensions 300 × 240 mm, cutout size 302 × 242 mm, mounting depth 72 mm Incl. installation frame and kit</p>
<p>DE Plan 200 T NEW</p>	<p>100 V version, power 7.5/15/30 watts</p>
<p>DE Plan 200 ST NEW</p>	<p>2-way stereo planar transducer with wide dispersion angle (180°) Power capacity RMS/program 2 × 30 / 60 watts, impedance 2 × 8 ohms Dimensions 300 × 240 mm, cutout size 302 × 242 mm, mounting depth 72 mm Incl. installation frame and kit</p>
<p>DE Plan 400 NEW</p>	<p>2-way planar transducer with wide dispersion angle (180°) Power capacity RMS/program 120 / 240 watts, impedance 8 ohms Dimensions 420 × 300 mm, cutout size 422 × 302 mm, mounting depth 72 mm Incl. installation frame and kit</p>
<p>DE Plan 400 T NEW</p>	<p>100 V version, power 15/30/60 watts</p>
<p>DE Plan 500 S</p>	<p>2-way planar transducer with small construction and wide dispersion angle (180°) Power capacity RMS/program 80 / 160 watts, impedance 8 ohms Dimensions 540 × 140 mm, cutout size 542 × 142 mm, mounting depth 72 mm Incl. installation frame and kit</p>

Model

Item no.

DE Plan 200	0401-0003
DE Plan 200 T	0401-0004
DE Plan 200 ST	0404-0002
DE Plan 400	0402-0003
DE Plan 400 T	0402-0004
DE Plan 500 S	0405-0001

DE Plan installation – we will be happy to assist you! You can find the detailed installation instructions on www.lb-lautsprecher.de



Mark, cut out, bevel edges, smooth.



Insert frame and secure feet.



Remove frame.



Insert loudspeaker system, secure...



... and test functioning.



Adjust fastening screws, spatula smooth and polish.



Stretch out glass fiber fabric, smooth down and leave to dry.



Smooth finely with spatula two to three times and polish transitions.



Alternatively, the entire surface including the speakers can be concealed using painter's lining.



Finally paint over.

NEW Invisible In-Wall / In-Ceiling Speakers

DE Plan 600 2-way planar transducer with wide dispersion angle (180°)
 Power capacity RMS/program 180 / 360 watts, impedance 6 ohms
 Dimensions 620 x 300 mm, cutout size 622 x 302 mm, mounting depth 72 mm
 Incl. assembly frame and kit

Model

Item no.



DE Plan 600

0403-0002

NEW Invisible 4-Channel Line-Array

DE Plan 800 AIArray 4-channel planar transducer with adjustable beam direction
 Power capacity RMS/program 4 x 60/120 watts, impedance 4 x 8 ohms
 Dimensions 300 x 720 mm, cutout size 302 x 722 mm, mounting depth 72 mm
 Incl. installation frame and kit

DE Plan 800 AIArray

0409-0001



Only in combination with system power amplifiers of the PA DSC Series



DE Plan 800 AIArray, in-ceiling installation with adjustable directivity



DE Plan 800 AIArray, in-wall installation with adjustable directivity

In the case of the **DE Plan 600 AIArray**, the dispersion direction is set by programming the corresponding DSP power amplifiers using our newly developed, browser-based **LB AUDIO CONTROL Software**. The required angle is set by selecting the appropriate preset from the preset library in 1° up to 3° increments. In addition to selection of the dispersion direction, the software also provides the usual setting options such as parametric EQs, delays, compressors, and limiters. Project-specific presets available on request.



PA Series
 DSP power amplifiers for driving the passive multi channel line arrays starting on page 43

LB AUDIO CONTROL
 Browser-based Software for our new DSPs
 Interface: Ethernet
 Download
www.lb-lautsprecher.de



NEW Invisible In-Wall / In-Ceiling Subwoofer

DE Plan 800 SUB Planar subwoofer with integrated crossover
 Power capacity RMS/program 240 / 480 watts, impedance 4 ohms
 Dimensions 720 x 300 mm, cutout size 722 x 302 mm, mounting depth 76 mm
 Incl. installation frame and kit

DE Plan 800 SUB

0408-0001



Only for use with our back boxes EG Plan 800 or EGB Plan 800



DE Plan Back Boxes

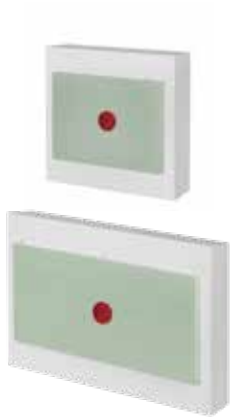
EG Plan 200	Back box for DE Plan 200, synthetic material, dimensions 400×350×100 mm
EG Plan 400	Back box for DE Plan 400, synthetic material, dimensions 500×480×120 mm
EG Plan 500 S	Back box for DE Plan 500 S, synthetic material, dimensions 620 × 240 × 100 mm
EG Plan 600	Back box for DE Plan 600, synthetic material, dimensions 700×480×120 mm
EG Plan 800	Back box for DE Plan 800, synthetic material, dimensions 800×480×120 mm

Model

EG Plan 200
EG Plan 400
EG Plan 500 S
EG Plan 600
EG Plan 800

Item no.

2301-0001
2302-0001
2303-0001
2304-0001
2310-0001



DE Plan Back Boxes for Concrete Ceilings






EGB Plan 200	Back box for concrete ceilings for DE Plan 200 Synthetic material, dimensions 400×350×128 mm, incl. rigid foam spacer
EGB Plan 400	Back box for concrete ceilings for DE Plan 400 Synthetic material, dimensions 500×480×148 mm, incl. rigid foam spacer
EGB Plan 500 S	Back box for concrete ceilings for DE Plan 500 S Synthetic material, dimensions 620 × 240 × 128 mm, Incl. rigid foam spacer
EGB Plan 600	Back box for concrete ceilings for DE Plan 600, all versions Synthetic material, dimensions 700×480×148 mm, incl. rigid foam spacer
EGB Plan 800	Back box for concrete ceilings for DE Plan 800, all versions Synthetic material, dimensions 800×480×148 mm, incl. rigid foam spacer

EGB Plan 200
EGB Plan 400
EGB Plan 500 S
EGB Plan 600
EGB Plan 800

2305-0001
2306-0001
2307-0001
2308-0001
2309-0001

DE Plan inside for Furniture Build-In

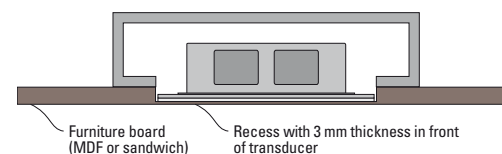
The special built-in versions of the **DE Plan inside® series** can be installed in furniture and wall panels. The speakers are back-mounted onto the front of furniture or panels made of wood, MDF or similar materials and directly resonate through these surfaces. As the radiating surface is driven without an intermediary membrane, DE Plan inside speakers achieve high efficiency and a wide linear frequency range. These speakers should be adapted to different built-in materials and room acoustics using our **DSP amplifiers**.

	Invisible Speakers for Furniture Build-In	Model	Item no.
	DE Plan 200 inside NEW 2-way planar transducer with wide dispersion angle (180°) Power capacity RMS/program 60 / 120 watts, impedance 8 ohms Dimensions 300 x 240 mm, recess size 302 x 242 mm, mounting depth 72 mm Incl. installation accessories	DE Plan 200 inside	0411-0001
	DE Plan 200 ST inside NEW 2-way stereo planar transducer with wide dispersion angle (180°) Power capacity RMS/program 2 x 30 / 60 watts, impedance 2 x 8 ohms Dimensions 300 x 240 mm, recess size 302 x 242 mm, mounting depth 72 mm Incl. installation accessories	DE Plan 200 ST inside	0414-0001
	DE Plan 400 inside NEW 2-way planar transducer with wide dispersion angle (180°) Power capacity RMS/program 120 / 240 watts, impedance 8 ohms Dimensions 420 x 300 mm, recess size 422 x 302 mm, mounting depth 72 mm Incl. installation accessories	DE Plan 400 inside	0412-0001
	DE Plan 500 S inside 2-way planar transducer with small construction and wide dispersion angle (180°) Power capacity RMS/program 80 / 160 watts, impedance 8 ohms Dimensions 540 x 140 mm, recess size 542 x 142 mm, mounting depth 72 mm Incl. installation accessories	DE Plan 500 S inside	0415-0001
	DE Plan 600 inside NEW 2-way planar transducer with wide dispersion angle (180°) Power capacity RMS/program 160 / 320 watts, impedance 6 ohms Dimensions 620 x 300 mm, recess size 622 x 302 mm, mounting depth 72 mm Incl. installation accessories	DE Plan 600 inside	0413-0001



We recommend the use of our back boxes to avoid uncontrolled sound effects inside the furniture caused by the sound emission from the rear of the speaker.

DE Plan inside installation – we will be happy to assist you!



DE Plan inside in recessed mounting area



DE Plan inside behind veneered board



INSTALLATION SERIES

Our **installation series** includes universal speaker models that can be installed in a variety of ways, for example wall-mounted, pendant, satellite, and monitor speakers as well as subwoofers. All models offer unbeatable sound quality and power for the respective design. Thanks to clear lines and a superior surface finish, these speakers blend seamlessly into indoor spaces with a sophisticated interior design. They can be used in premium home audio systems as well as in installations for media spaces, presentation areas, and hospitality venues. Thanks to their balanced sound, they can be perfectly combined with the corresponding models from our built-in speaker series.

- Clear shapes
- High-quality surfaces
- Very linear reproduction
- Wide frequency range



Best Western Hotel Zuffenhausen
PA system with suspended FZ 180 Polar speakers

Buga Erfurt
Multi channel sound system
with S 403 speakers



DA 250 Q Polar
2-way on-wall speaker
with aluminium housing
and passive radiators



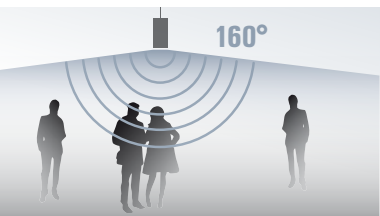
SUB 40 and SUB 40 A
High-performance subwoofers
with double vented bandpass
cabinets



S 2
High-end satellite speaker with
precise electronic linearization



FZ 140 Polar
Cylindric speaker
with aluminium housing
for suspension from
the ceiling



Our **two-way on-wall and cylinder speakers** with **Polar® technology** feature an exceptionally wide and constant dispersion angle. The cabinet designs with passive membranes ensure excellent low-frequency reproduction. These speaker models can be used to evenly cover spaces with excellent sound quality even without subwoofers.

On-Wall Speakers



DA 180 On-wall full-range speaker for ceiling and wall mounting with electronic equalization
Power capacity RMS/program 20 / 40 watts, 8 ohms
Diameter 180 mm, depth 70 mm

Model

Item no.

DA 180 White 0501-0001
DA 180 Black 0501-0002

DA 180 T 100 V version, power 2.5/5/10 watts

DA 180 T White 0501-0003
DA 180 T Black 0501-0004



On-Wall Polar Speakers



DA 250 Polar 2-way on-wall speaker with Polar technology and passive radiators
180° dispersion angle, power capacity RMS/program 30 / 60 watts, 8 ohms
Diameter 260 mm, depth 80 mm

DA 250 Polar White 0511-0001
DA 250 Polar Black 0511-0002

DA 250 T Polar 100 V version, power 7.5/15/30 watts

DA 250 T Polar White 0511-0003
DA 250 T Polar Black 0511-0004



DA 250 Q Polar 2-way on-wall speaker with Polar technology and passive radiators
180° dispersion angle, power capacity RMS/program 30 / 60 watts, 8 ohms
Dimensions 260 x 260 mm, depth 80 mm

DA 250 Q Polar White 0511-0005
DA 250 Q Polar Black 0511-0006

DA 250 QT Polar 100 V version, power 7.5/15/30 watts

DA 250 QT Polar White 0511-0007
DA 250 QT Polar Black 0511-0008

Cylindric Speakers



FZ 110 Cylindric full-range speaker with electronic equalization
Power capacity RMS/program 20 / 40 watts, 8 ohms
Diameter 110 mm, length 190 mm

FZ 110 White 0601-0001
FZ 110 Black 0601-0002

FZ 110 T 100 V version, power 2.5/5/10 watts

FZ 110 T White 0601-0003
FZ 110 T Black 0601-0004



WH 110 Rotatable/pivotable L-bracket with assembly plate
Suitable for RL 110 / FZ 110, incl. safety rope

WH 110 White 7109-0001
WH 110 Black 7109-0002

SR 300 Stainless steel rope for pendant mounting, length 3 m, thickness 1 mm, one side with loop

SR 300 7109-0003

Cylindric Polar Speakers with 160° Dispersion Angle



FZ 140 Polar **NEW** Cylindric 2-way speaker with Polar technology and passive radiator
Wide dispersion angle (160°) Power capacity RMS/program 30 / 60 watts, 8 ohms
Diameter 140 mm, lenght 240 mm

Model

Item no.

FZ 140 Polar White 0602-0001
FZ 140 Polar Black 0602-0002

FZ 140 T Polar 100 V version, power 7.5/15/30 watts

FZ 140 T Polar White 0602-0003
FZ 140 T Polar Black 0602-0004



WH 140 Rotatable/pivotable L-bracket with assembly plate
Suitable for RL 140 / FZ 140, incl. safety rope

WH 140 White 7109-0004
WH 140 Black 7109-0005

SR 300 Stainless steel rope for pendant mounting, lenght 3 m, thickness 1 mm, one side with loop

SR 300 7109-0003



FZ 180 Polar Cylindric 2-way speaker with Polar technology and passive radiator
Wide dispersion angle (160°), power capacity RMS/program 60 / 120 watts, 8 ohms
Diameter 180 mm, lenght 280 mm

FZ 180 Polar White 0603-0001
FZ 180 Polar Black 0603-0002

FZ 180 T Polar 100 V version, power 7.5/15/30 watts

FZ 180 T Polar White 0603-0003
FZ 180 T Polar Black 0603-0004

Cylindric Speakers with Narrow Dispersion Angle (80°)



FZ 180 CD Cylindric 2-way speaker with CD characteristics and passive radiator
80° dispersion angle, power capacity RMS/program 60 / 120 watts, 8 ohms
Diameter 180 mm, lenght 280 mm

FZ 180 CD White 0603-0005
FZ 180 CD Black 0603-0006

FZ 180 CDT 100 V version, power 7.5/15/30 watts

FZ 180 CDT White 0603-0007
FZ 180 CDT Black 0603-0008



WH 180 Rotatable/pivotable L-bracket with assembly plate
Suitable for RL 180 / FZ 180, incl. safety rope

WH 180 White 7109-0006
WH 180 Black 7109-0007

SR 300-16 Stainless steel rope for pendant mounting, lenght 3 m, thickness 1.6 mm, one side with loop

SR 300-16 7109-0008



Satellite Speakers

		Model	Item no.
S 2	High-end satellite speaker with integrated high-pass filter Power capacity RMS/program 20 / 40 watts, 8 ohms, dim. (W × H × D) 80 × 100 × 105 mm	S 2 White S 2 Black	0801-0001 0801-0002
S 2 T	100 V version, power 2.5/5/10 watts	S 2 T White S 2 T Black	0801-0003 0801-0004
S 2 A	Active high-end satellite speaker, power 20 watts, Auto-On / Off, incl. power supply	S 2 A White S 2 A Black	0801-0005 0801-0006
WH 10	Wall-mount for S 2, 30 mm wall distance	WH 10 White WH 10 Black	7108-0001 7108-0002
WH 20	Wall-mount for S 2, 60 mm wall distance	WH 20 White WH 20 Black	7108-0003 7108-0004
WH 40	Wall-mount for S 2, 120 mm wall distance	WH 40 White WH 40 Black	7108-0005 7108-0006
WS2-0°	Angle bracket 0° for S 2-cluster Incl. mounting accessories	WS2-0° White WS2-0° Black	7108-0007 7108-0008
WS2-10°	Angle bracket 10° for S 2-cluster Incl. mounting accessories	WS2-10° White WS2-10° Black	7108-0009 7108-0010
WS2-20°	Angle bracket 20° for S 2-cluster Incl. mounting accessories	WS2-20° White WS2-20° Black	7108-0011 7108-0012

Flat, on-wall speakers with high efficiency designed for use as front speakers in media spaces and surround systems. For full-range reproduction, we recommend combining with our subwoofers.



Satellite Speakers for Media Rooms

S 403	3-way on-wall speaker (for vertical or horizontal mounting) Dispersion angle (H × V) 100° × 100°, power capacity RMS/program 80 / 160 watts Impedance 8 ohms, dimensions (W × H × D) 80 × 700 × 48 mm Precision steel grille, wall-mount not included	S 403 White S 403 Black	0802-0001 0802-0002
S 403 T	100 V version, power 7.5/15/30 watts	S 403 T White S 403 T Black	0802-0003 0802-0004
SH 50	Pivotable wall-mount, for S 403, 30 mm wall distance	SH 50 White SH 50 Black	7110-0003 7110-0004

Other colours and customized versions on request



Monitor Speakers

F 4 Very linear 2-way speaker with CD characteristics, dispersion angle (H x V) 90° x 90°
Power capacity RMS/program 50 / 100 watts, impedance 8 ohms
Dimensions (W x H x D) 140 x 250 x 180 mm, semi-matte varnish, steel grille

UB 4 U-bracket for F 4, powder-coated, incl. mounting accessories

UB 4 Q U-bracket for F 4, horizontal installation, powder-coated, incl. mounting accessories

F 6 Very linear 2-way speaker with CD characteristics, dispersion angle (H x V) 90° x 90°
Power capacity RMS/program 90 / 180 watts, impedance 8 ohms
Dimensions (W x H x D) 215 x 350 x 260 mm, semi-matte varnish, steel grille

F 6 A 2-way active speaker, power 120 watts + 80 watts
XLR and PowerCon connectors

UB 6 U-bracket for F 6, powder-coated, incl. mounting accessories

UB 6 Q U-bracket for F 6, horizontal installation, powder-coated, incl. mounting accessories

WH 350 Rotatable / pivotable wall-mount suitable for F4/F6

Model

F 4 White
F 4 Black

UB 4 White
UB 4 Black

UB 4 Q White
UB 4 Q Black

F 6 White
F 6 Black

F 6 A Black
F 6 A White

UB 6 White
UB 6 Black

UB 6 Q White
UB 6 Q Black

WH 350 White
WH 350 Black

Item no.

0702-0001
0702-0002

7114-0001
7114-0002

7114-0003
7114-0004

0704-0001
0704-0002

0704-0003
0704-0004

7114-0005
7114-0006

7114-0007
7114-0008

7114-0028
7114-0029

Subwoofers

Our **high-power subwoofers** use dual-vented bandpass cabinets that ensure maximum sound pressure levels with compact dimensions. Due to the minimized surface area of the sound outlets, the subwoofers can be discreetly integrated in indoor spaces or furniture. The **active models** feature class D amplifier modules equipped with limiters, VCAs, and an automatic switch-on function.



Subwoofers		Model	Item no.
SUB 20	Compact double-vented bandpass subwoofer, 6.5" long excursion driver Impedance 8 ohms, power capacity RMS/program 100 / 200 watts Dimensions (W x H x D) 190 x 320 x 400 mm, semi-matte varnish	SUB 20 White	1310-0001
		SUB 20 Black	1310-0002
SUB 20 A	Compact active subwoofer, 6.5" long excursion driver Cinch / XLR sym. / speaker level inputs, power 200 watts, Auto-On/Off Dimensions (W x H x D) 190 x 320 x 400 mm, semi-matte varnish	SUB 20 A White	1310-0003
		SUB 20 A Black	1310-0004
SUB 40	Compact double-vented bandpass subwoofer, 2 x 6.5" long excursion driver Impedance 8 ohms, power capacity RMS/program 200 / 400 watts Dimensions (W x H x D) 250 x 400 x 500 mm, semi-matte varnish	SUB 40 White	1320-0001
		SUB 40 Black	1320-0002
SUB 40 A	Compact active subwoofer, 2 x 6.5" long excursion driver Cinch / XLR sym. / speaker level inputs, power 400 watts, Auto-On/Off Dimensions (W x H x D) 250 x 400 x 500 mm, semi-matte varnish	SUB 40 A White	1320-0003
		SUB 40 A Black	1320-0004
SUB 80	Compact double-vented bandpass subwoofer, 4 x 6.5" long excursion driver Impedance 4 ohms, power capacity RMS/program 400 / 800 watts Dimensions (W x H x D) 320 x 520 x 650 mm, semi-matte varnish	SUB 80 White	1330-0001
		SUB 80 Black	1330-0002
SUB 80 A	Compact active subwoofer, 4 x 6.5" long excursion driver Cinch / XLR sym. / speaker level inputs, power 800 watts, Auto-On/Off Dimensions (W x H x D) 320 x 520 x 650 mm, semi-matte varnish	SUB 80 A White	1330-0003
		SUB 80 A Black	1330-0004

Customized Subwoofers

We offer numerous customized subwoofers with individual cabinet dimensions. This allows an almost invisible integration of the subwoofers into ceilings, walls, wall paneling or built-in furniture. We will be happy to assist you!

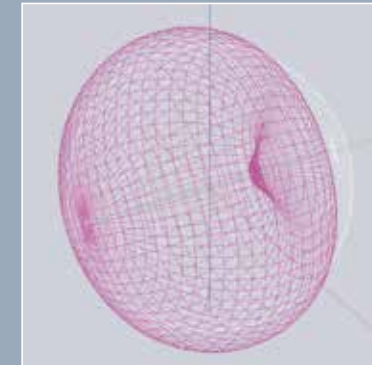
ib DIRECTIONAL SPEAKERS

The **RL series** includes directional speakers with a cardioid or supercardioid pattern for targeted sound transmission and high speech intelligibility. They can be used in exhibition centers with limited listening zones as well as for voice amplification in conference spaces, auditoriums, and large public spaces such as foyers, halls, and train and bus stations.

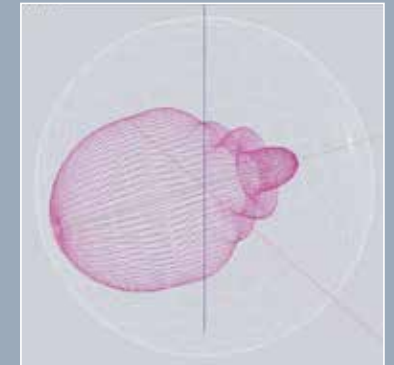
► rlseries

The **RL 110 Series** was specially designed for targeted sound transmission at exhibitions and museums

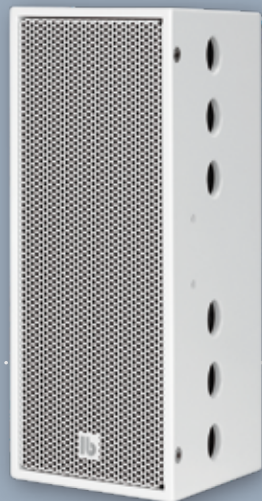
ZKM Karlsruhe active directional speakers with integrated motion sensors (RL 110 AX)



The pendant speakers **RL 180 NT** and **RL 180 NT EVAC** with cardioid pattern are dedicated to over large public spaces. The backward sound emission to the ceiling is minimized.



The models **RL 110**, **RL 204 SN** and **RL 206 SN** with supercardioid pattern and narrow beam width are used to cover defined listening areas.



RL 204 SN
2-way directional speaker with supercardioid pattern for targeted sound transmission in rooms with long reverberation time

Kunstabau Munich mobile multi channel PA system with **RL 206 SN** directional speakers



In the **RL 110 series**, the lateral arrangement of the sound outlets in the cabinet causes a supercardioid pattern to be generated. This design principle provides a high level of sound focus with minimum lateral and rear dispersion across the entire frequency range.



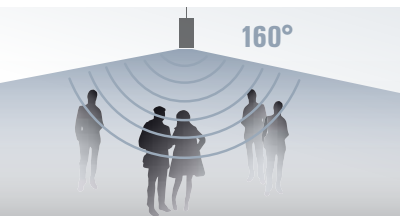
Directional Speakers with Narrow Dispersion Angle (80°)		Model	Item no.
RL 110	Full-range directional speaker with narrow dispersion angle (80°) Power capacity RMS/program 20 / 40 watts, 8 ohms Diameter 110 mm, length 190 mm	RL 110 White	0901-0001
		RL 110 Black	0901-0002
RL 110 T	100 V version, power 2.5/5/10 watts	RL 110 T White	0901-0003
		RL 110 T Black	0901-0004
RL 110 A	Active full-range directional speaker with narrow dispersion angle (80°) Power 20 watts, incl. power supply, diameter 110 mm, length 190 mm	RL 110 A White	0901-0005
		RL 110 A Black	0901-0006
RL 110 A-MP3	Active full-range directional speaker with integrated MP3 player and narrow dispersion angle (80°), power 20 watts, incl. power supply Diameter 110 mm, length 190 mm	RL 110 A-MP3 White	0901-0007
		RL 110 A-MP3 Black	0901-0008
RL 110 AX	Active full-range directional speaker with integrated motion sensor and narrow dispersion angle (80°), power 20 watts, incl. power supply Diameter 110 mm, length 190 mm	RL 110 AX White	0901-0009
		RL 110 AX Black	0901-0010
RL 110 AX-MP3	Active full-range directional speaker with integrated motion sensor, MP3 player and narrow dispersion angle (80°) Power 20 watts, incl. power supply, diameter 110 mm, length 190 mm	RL 110 AX-MP3 White	0901-0011
		RL 110 AX-MP3 Black	0901-0012



The patented active directional loudspeaker **RL 110 PerZonic®** automatically adapts the output volume to the ambient noise of the listening zone. The control settings can be adjusted to the respective sound environment.



RL 110 PerZonic	PerZonic active directional speaker with volume control and narrow dispersion angle (80°) Power 20 watts, incl. power supply, diameter 110 mm, length 190 mm	RL 110 PerZonic White	0901-0013
		RL 110 PerZonic Black	0901-0014
WH 110	Rotatable/pivotable L-bracket with assembly plate Suitable for RL 110 / FZ 110, incl. safety rope	WH 110 White	7109-0001
		WH 110 Black	7109-0002
SR 300	Stainless steel rope for pendant mounting, length 3 m, thickness 1 mm, one side with loop	SR 300	7109-0003



Thanks to its cardioid pattern, the **RL 180 N Polar®** is especially suitable for consistent sound transmission from the in-ceiling sound system in indoor spaces with long reverberation times.



Directional Polar Speakers with Cardioid Pattern (160°)



RL 180 N Polar 2-way speaker with Polar technology and cardioid pattern, high efficiency and wide dispersion angle (160°), power capacity RMS/program 60 / 120 watts 8 ohms, diameter 180 mm, length 280 mm

RL 180 NT Polar 100 V version, power 7.5/15/30 watts

WH 180 Rotatable /pivotable L-bracket with assembly plate
Suitable for RL 180 / FZ 180, incl. safety rope

SR 300-16 Stainless steel rope for pendant mounting
Length 3 m, thickness 1.6 mm, one side with loop

Model

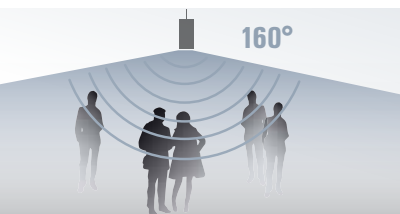
Item no.

RL 180 N Polar White 0903-0001
RL 180 N Polar Black 0903-0002

RL 180 NT Polar White 0903-0003
RL 180 NT Polar Black 0903-0004

WH 180 White 7109-0006
WH 180 Black 7109-0007

SR 300-16 7109-0008



The **RL 180 NT EVAC** is a 2-way speaker that is certified in accordance with **EN 54-24** and designed to be suspended from ceilings in indoor spaces with long reverberation times. The proven Polar® technology achieves a constantly wide dispersion angle at medium and high frequencies. The cardioid pattern at low frequencies minimizes sound dispersion towards the back, effectively suppressing interference caused by sound reflections from the ceiling. As such, just a few RL 180 NT EVAC speakers can be used to achieve exceptionally consistent sound transmission with high speech intelligibility, even in acoustically challenging spaces.

Directional Polar Speakers with Cardioid Pattern (160°) for Voice Alarm Systems



RL 180 NT EVAC 2-way speaker with Polar technology and cardioid pattern, high efficiency and wide dispersion angle (160°) power capacity RMS/program 60 / 120 watts, 8 ohms
Diameter 180 mm, length 280 mm

WH 180 Rotatable/pivotable L-bracket with assembly plate
Suitable for RL 180 / FZ 180, incl. safety rope

SR 300-16 Stainless steel rope for pendant mounting
Length 3 m, thickness 1.6 mm, one side with loop

RL 180 NT EVAC White 0904-0001
RL 180 NT EVAC Black 0904-0002

WH 180 White 7109-0006
WH 180 Black 7109-0007

SR 300-16 7109-0008



The **RL 204 SN** and **RL 206 SN** models are PA speakers with a supercardioid pattern. The cabinet design with lateral sound outlets that emit inversely phased sound creates a high level of directivity across the entire frequency range. These speakers can also be used in spaces with long reverberation times to create sound systems with high speech intelligibility and clear reproduction of music. For full-range applications, we recommend combining with our subwoofers.



Directional Speakers with Super Cardioid Pattern (H×V) 80°×40°		Model	Item no.
RL 204 SN	2-way directional speaker with supercardioid pattern Dispersion angle (H × V) 80° × 40°, power RMS / program 80 / 160 watts, 8 ohms Dimensions (W × H × D) 160 × 370 × 180 mm Trapezoid cabinet, semi-matte varnish, steel grille	RL 204 SN White	0905-0001
		RL 204 SN Black	0905-0002
UB 204	U-bracket for RL 204 incl. mounting accessories, powder-coated	UB 204 White	7114-0009
		UB 204 Black	7114-0010
RL 206 SN	2-way directional speaker with supercardioid pattern Dispersion angle (H × V) 80° × 40°, power RMS / program 120 / 240 watts, 8 ohms Dimensions (W × H × D) 246 × 566 × 273 mm Trapezoid cabinet, semi-matte varnish, steel grille	RL 206 SN White	0906-0001
		RL 206 SN Black	0906-0002
RL 206 SN-A	Active 2-way directional speaker Power 200 watts + 80 watts Connectors: XLR and PowerCon, switchable high-pass filter and ground lift	RL 206 SN-A White	0906-0003
		RL 206 SN-A Black	0906-0004
UB 206	U-bracket for RL 206 incl. mounting accessories, powder-coated	UB 206 White	7114-0011
		UB 206 Black	7114-0012
WH 350	Rotatable/pivotable wall-mount Suitable for RL 204 SN / RL 206 SN	WH 350 White	7114-0028
		WH 350 Black	7114-0029

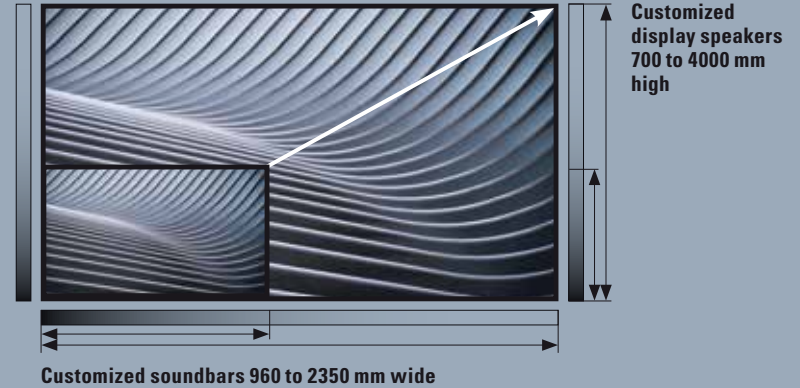


DISPLAY SPEAKERS AND SOUNDBARS

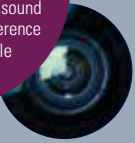
Our **display speakers** and **soundbars** are designed for video conferences and high-quality sound reproduction in media spaces. The active stereo systems are equipped with a digital signal processor (DSP) and multiband limiters. They offer a broad frequency range and facilitate high speech intelligibility.

The DL-A 2.2 and SB-A 2.2 models are active 2-way systems with integrated subwoofers and higher output power. They are especially suited to larger indoor spaces and superior music reproduction.

Our new models **DLA 2.4 DSC** and **DLX-A 2.8 DSC** with beam steering have been developed specifically with large displays and LED walls in mind.



The **SB-A 2.0 CAM Series** comprises active stereo soundbars with integrated camera that offer outstanding picture and sound quality in small conference rooms and huddle rooms.

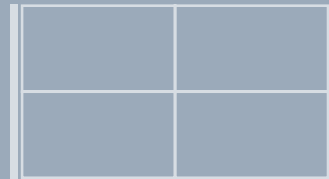


Clifford Chance Munich
Display speakers for conference rooms

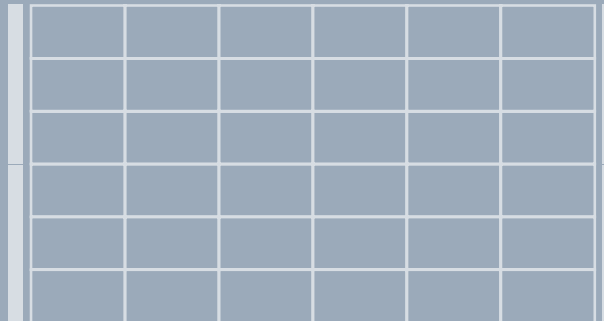


al:array[®]
adapted line array

GE Additive Garching, Sound system for media rooms and beam steering line arrays for LED wall



Customized soundbars 960 to 2350 mm wide and display speakers 700 to 4000 mm high for high quality sound reproduction at displays, split walls and LED walls.



The vertical beam direction of the DSP-controlled line arrays is set using presets in our new **LB AUDIO CONTROL Software**.



NEW ACTIVE DISPLAY SPEAKERS WITH BEAM STEERING

The new active display speakers DL-A 2.4 DSC AIArray and DLX-A 2.8 DSC AIArray are designed for combinations with large displays, split walls, and LED walls. Both models feature an adjustable vertical beam direction and can be optimally directed towards listeners.

display series



Active Soundbars

SB-A 2.0 Active stereo soundbar with integrated DSP
2 x 50 watts, Auto-On, external power supply, dim. (W x H x D) 960 x 80 x 48 mm

Customized Versions

SB-A 2.0-1200 Width on measure, 960 – 1200 mm
SB-A 2.0-1600 Width on measure, 1200 – 1600 mm
SB-A 2.0-2000 Width on measure, 1600 – 2000 mm
SB-A 2.0-2350 Width on measure, 2000 – 2350 mm

Fee SB Customized version fee SB (one-time charge per display type and order)

Model

SB-A 2.0 Black

SB-A 2.0-1200 Black
SB-A 2.0-1600 Black
SB-A 2.0-2000 Black
SB-A 2.0-2350 Black

Fee SB

Item no.

1213-0001

1213-0002
 1213-0003
 1213-0004
 1213-0005

1213-0006

SB-A 2.2 Active stereo soundbar with integrated subwoofers and DSP
2 x 50 + 2 x 100 watts, Auto-On, external power supply
Dimensions (W x H x D) 1200 x 80 x 103 mm

Customized Versions

SB-A 2.2-1600 Width on measure, 1200 – 1600 mm
SB-A 2.2-2000 Width on measure, 1600 – 2000 mm
SB-A 2.2-2350 Width on measure, 2000 – 2350 mm

Fee SB Customized version fee SB (one-time charge per display type and order)

SB-A 2.2 Black

SB-A 2.2-1600 Black
SB-A 2.2-2000 Black
SB-A 2.2-2350 Black

Fee SB

1223-0001

1223-0002
 1223-0003
 1223-0004

1213-0006

display^{CAM}
series



Huddly
Camera



Soundbars for Video conferences with integrated Camera

Active soundbars with integrated camera and microphone array for huddle rooms and medium-sized conference spaces.

SB-A 2.0 CAM+ Active stereo soundbar with integrated camera and microphone (Huddly IQ)
2 x 50 watts, Auto-On, external power supply
Dimensions (W x H x D) 960 x 80 x 48 mm

Customized Versions

SB-A 2.0-1200 CAM+ Width on measure, 960 – 1200 mm
SB-A 2.0-1600 CAM+ Width on measure, 1200 – 1600 mm
SB-A 2.0-2000 CAM+ Width on measure, 1600 – 2000 mm

Fee SB Customized version fee SB (one-time charge per display type and order)

SB-A 2.0 Black CAM+

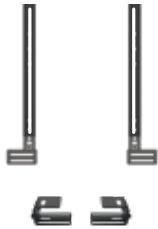
SB-A 2.0-1200 Black CAM+
SB-A 2.0-1600 Black CAM+
SB-A 2.0-2000 Black CAM+

Fee SB

1215-0005

1215-0006
 1215-0007
 1215-0008

1213-0006



Mounts for Soundbars

		Model	Item no.
SB-VESA	VESA mount for display soundbars SB-A 2.0 and SB-A 2.2	SB-VESA Black	7111-0012
WH 80	Adjustable wall-mount from 35 up to 110 mm wall distance (1 pair per soundbar)	WH 80 Black Pair	7111-0013



Active Display Speakers

DL-A 2.0	Active stereo speaker pair with integrated DSP 2 x 50 watts, Auto-On, external power supply Dimensions (W x H x D) 80 x 700 x 48 mm	DL-A 2.0 Black Pair	1113-0001
-----------------	---	----------------------------	-----------

Customized Versions

DL-A 2.0-900	Height on measure, 600 – 900 mm	DL-A 2.0-900 Black	1113-0002
DL-A 2.0-1200	Height on measure, 900 – 1200 mm	DL-A 2.0-1200 Black	1113-0003
DL-A 2.0-1600	Height on measure, 1200 – 1600 mm	DL-A 2.0-1600 Black	1113-0004
Fee DL	Customized version fee DL (one-time charge per display type and order)	Fee DL	1113-0005



DL-A 2.2	Active stereo speaker pair with integrated subwoofers and DSP, pair, 2 x 50 + 2 x 100 watts, Auto-On, external power supply Dimensions (W x H x D) 80 x 700 x 103 mm	DL-A 2.2 Black Pair	1123-0001
-----------------	---	----------------------------	-----------

Customized Versions

DL-A 2.2-900	Height on measure, 700 – 900 mm	DL-A 2.2-900 Black	1123-0002
DL-A 2.2-1200	Height on measure, 900 – 1200 mm	DL-A 2.2-1200 Black	1123-0003
DL-A 2.2-1600	Height on measure, 1200 – 1600 mm	DL-A 2.2-1600 Black	1123-0004
Fee DL	Customized version fee DL (one-time charge per display type and order)	Fee DL	1113-0005

VESA-Mounts for Display Speakers

DL-VESA 1150	VESA-mount for display width 900 – 1150 mm	DL-VESA 1150 Black	7111-0006
DL-VESA 1400	VESA-mount for display width 1150 – 1400 mm	DL-VESA 1400 Black	7111-0007
DL-VESA 1650	VESA-mount for display width 1400 – 1650 mm	DL-VESA 1650 Black	7111-0008
DL-VESA 1900	VESA-mount for display width 1650 – 1900 mm	DL-VESA 1900 Black	7111-0009
DL-VESA 2150	VESA-mount for display width 1900 – 2150 mm	DL-VESA 2150 Black	7111-0010
DL-VESA 2400	VESA-mount for display width 2150 – 2400 mm	DL-VESA 2400 Black	7111-0011

DUAL-VESA-Mounts for Split-Walls width 1800 – 4800 mm are available on request.

Wall-mounts for Display Speakers

SH 50	Pivotable wall-mount, 30 mm wall distance (2 pieces per speaker pair)	SH 50 Black	7110-0004
WH 80	Adjustable wall-mount from 35 up to 110 mm wall distance (2 pairs per speaker pair)	WH 80 Black Pair	7111-0013



Active Display Speakers with Beam Steering for large screens

The new **active display speakers** DL-A 2.4 DSC AIArray and DLX-A 2.8 DSC AIArray are designed for combinations with large displays, split walls, and LED walls. Both models feature an adjustable vertical dispersion direction and can be optimally directed towards listeners regardless of installation height. The dispersion direction is set by selecting the corresponding preset in our newly developed **LB AUDIO CONTROL Software** in 1° up to 3° increments. The 3-way systems offer two power levels (2 x 500 watts and 2 x 1000 watts) and include integrated subwoofers. They are ideal for high-quality reproduction of speech and music, even in larger indoor spaces. We also manufacture custom versions of both models tailored to the relevant display height.



Active Display Speakers with Beam Steering

DL-A 2.4 DSC AIArray
NEW Active 3-way stereo speaker pair with adjustable beam direction
Power 2 x 500 watts, DSP, Ethernet, Auto On, Inputs symmetrical + cinch
External power supply, dimensions (W x H x D) 80 x 1080 x 103 mm

Customized Versions

DL-A 2.4 DSC-1600 Height on measure, 1080 – 1600 mm
DL-A 2.4 DSC-2000 Height on measure, 1600 – 2000 mm
DL-A 2.4 DSC-2350 Height on measure, 2000 – 2350 mm

Fee DL Customized version fee DL (one-time charge per display type and order)

Model

Item no.

DL-A 2.4 DSC AIArray Black Paar 1133-0001

DL-A 2.4 DSC-1600 Black 1133-0002
DL-A 2.4 DSC-2000 Black 1133-0003
DL-A 2.4 DSC-2350 Black 1133-0004

Fee DL 1113-0005



DL-A 2.4 DSC AIArray

Active display speaker pair with adjustable beam direction for conference rooms and medium size spaces.

DL-A 2.4 DSC AIArray and DLX-A 2.8 DSC AIArray

The vertical beam direction of the DSP controlled line arrays is set by selecting the corresponding preset in our newly developed **LB AUDIO CONTROL Software** in 1° up to 3° increments within a range of +/- 30°.

LB AUDIO CONTROL

Browser-based Software
for our new DSPs
Interface: Ethernet
Download
www.lb-lautsprecher.de



Active Display Speakers with Beam Steering for large screens



Active Display Speakers with Beam Steering

DLX-A 2.8 DSC AIArray	Active 2-way stereo speaker pair with integrated subwoofers and adjustable beam direction, power 2 x 1000 watts, external power supply Dimensions (W x H x D) 150 x 2400 x 170 mm
DLX-A 2.8 DSC 4000	Height on measure, 2400 – 4000 mm
Fee DL	Customized version fee DL (one-time charge per display type and order)

Model

Item no.

DLX-A 2.8 DSC AIArray Black Pair	1135-0001
DLX-A 2.8 DSC 4000 Black Pair	1135-0002
Fee DL	1113-0005



DLX-A 2.8 DSC AIArray

Active display speaker pair with integrated subwoofers and adjustable beam direction for large spaces.

DL-A 2.4 DSC AIArray and DLX-A 2.8 DSC AIArray

The vertical beam direction of the DSP controlled line arrays is set by selecting the corresponding preset in our newly developed **LB AUDIO CONTROL Software** in 1° up to 3° increments within a range of +/- 30°.

LB AUDIO CONTROL

Browser-based Software
for our new DSPs
Interface: Ethernet
Download
www.lb-lautsprecher.de





COLUMN SPEAKERS

The line arrays of the **ZL series** are powerful speaker systems for targeted sound dispersion with a high level of directivity. As well as models with a variety of fixed dispersion characteristics, we also provide multichannel line arrays with adjustable dispersion characteristics. All models feature an elegant cabinet that is just 8 cm wide and are fitted with high-efficiency audiophile full-range speakers, ensuring high speech intelligibility as well as outstanding music reproduction. Due to the large number of sound sources, the ZL series has an extremely low feedback tendency when using a microphone.

- Low feedback tendency
- Audiophile full-range speaker
- Very good low frequency sound
- Speech and music
- Elegant slim design
- A variety of fixed and adjustable dispersion characteristics



Schattdecor Rohrdorf
PA system with beam steering
line arrays

LB AUDIO CONTROL
 Browser-based Software
 for our new DSPs
 Interface: Ethernet
 Download
www.lb-lautsprecher.de



The passive and active multichannel line arrays of the ZL series feature vertical directivity that can be set using our new **LB AUDIO CONTROL Software**. This allows targeted sound transmission in large public areas.



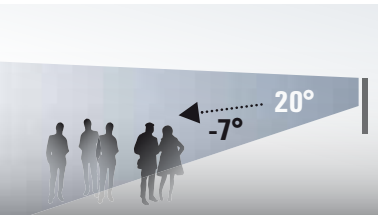
Lenbachhaus Munich
Multi channel sound
system with line
arrays and wireless
speakers



ZL Serie
Line arrays 480 to 2500 mm high and with a wide frequency range for reproduction of speech and music. The various models come with fixed or electronically adjustable directivity (beam steering) and can be operated individually or in multi-unit line arrays.

Column Speakers

The passive line arrays in the **ZL series** offer different vertical dispersion characteristics and a wide linear frequency range. They suited for high quality reproduction of speech and music with low feedback response.



Please quote bracket type at the time of order

Column Speakers

ZL 50	Line array, with electronic equalization, dispersion angle (H x V) 120° x 20° Power capacity RMS/program 90 / 180 watts, 8 ohms Dimensions (W x H x D) 80 x 480 x 110 mm, brackets not included
ZL 50 T	100 V version, 7.5/15/30 watts
ZL 100	Line array, with electronic equalization, dispersion angle(H x V) 120° x 10° Power capacity RMS/program 180 / 360 watts, 8 ohms Dimensions (W x H x D) 80 x 960 x 110 mm, brackets not included
ZL 100 T	100 V version, 15/30/60 watts
ZL 104	4-way line array with asymmetric dispersion Characteristics (-7° vertical), dispersion angle (H x V) 120° x 20° Power capacity RMS/program 180 / 360 watts 8 ohms, dimensions (W x H x D) 80 x 960 x 110 mm Brackets not included
ZL 104 T	100 V version, 15/30/60 watts
ZL 108	3-way line array, dispersion angle (H x V) 120° x 40° Power capacity RMS/program 140 /280 watts, 8 ohms Dimensions (W x H x D) 80 x 960 x 110 mm Brackets not included
ZL 108 T	100 V version, 15/30/60 watts



Model

Item no.

ZL 50 White	1002-0001
ZL 50 Black	1002-0002
ZL 50 T White	1002-0003
ZL 50 T Black	1002-0004
ZL 100 White	1003-0001
ZL 100 Black	1003-0002
ZL 100 T White	1003-0003
ZL 100 T Black	1003-0004
ZL 104 White	1004-0001
ZL 104 Black	1004-0002
ZL 104 T White	1004-0003
ZL 104 T Black	1004-0004
ZL 108 White	1005-0001
ZL 108 Black	1005-0002
ZL 108 T White	1005-0003
ZL 108 T Black	1005-0004

Mounting Accessories for ZL Series

SH 20	Pivotable wall-mount for ZL 50 30 mm wall distance	SH 20 White	7110-0001
		SH 20 Black	7110-0002
SH 50	Pivotable wall-mount for ZL 100 up to ZL 250 30 mm wall distance	SH 50 White	7110-0003
		SH 50 Black	7110-0004
W-ZL	L-bracket (pair) for ZL series	W-ZL White	7110-0005
		W-ZL Black	7110-0006

Other colours and customized versions on request

Passive multichannel **line arrays** for operation with the multichannel DSP power amplifiers of the PA series. The vertical directivity can be adjusted using our newly developed, browser-based **LB AUDIO CONTROL Software**. The line arrays can be combined to create longer arrays.

Passive Multi-Channel Column Speakers

		Model	Item no.
ZL 125 AIArray	Passive 4-channel high-power line array with AIArray technology for 4-channel active operation, adjustable vertical directivity Power capacity RMS/program 4 x 60 / 120 watts, 8 ohms Dimensions (W x H x D) 80 x 1250 x 110 mm, brackets not included	ZL 125 AIArray White	1006-0001
		ZL 125 AIArray Black	1006-0002
ZL 200 AIArray	Passive 6-channel high-power line array with AIArray technology for 6-channel active operation, adjustable vertical directivity Power capacity RMS/program 6 x 60 / 120 watts, 8 ohms Dimensions (W x H x D) 80 x 1920 x 110 mm, brackets not included	ZL 200 AIArray White	1007-0001
		ZL 200 AIArray Black	1007-0002
ZL 250 AIArray	Passive 8-channel high-power line array with AIArray technology for 8-channel active operation, adjustable vertical directivity Power capacity RMS/program 8 x 60 / 120 watts, 8 ohms Dimensions (W x H x D) 80 x 2500 x 110 mm, brackets not included	ZL 250 AIArray White	1008-0001
		ZL 250 AIArray Black	1008-0002

Active, DSP-controlled line arrays with adjustable vertical directivity and a long throw ensure consistent sound transmission across large spaces. They offer an exceptionally wide frequency range and are ideally suited for both speech and music reproduction.

Active Column Speakers with Integrated DSP

ZL 200 A-DSC AIArray	Active 6-channel line array with DSP, the vertical directivity is adjustable via our LB AUDIO CONTROL Software, 24 x 2.5" long excursion full-range drivers Power 6 x 100 watts, input: XLR sym., interface: Ethernet Dimensions (W x H x D) 80 x 1920 x 110 mm, brackets not included	ZL 200 A-DSC AIArray White	1009-0001
		ZL 200 A-DSC AIArray Black	1009-0002
ZL 250 A-DSC AIArray	Active 8-channel line array DSP, the vertical directivity is adjustable via our LB AUDIO CONTROL Software, 32 x 2.5" long excursion full-range drivers Power 8 x 100 watts, input: XLR sym., interface: Ethernet Dimensions (W x H x D) 80 x 2500 x 110 mm, brackets not included	ZL 250 A-DSC AIArray White	1010-0001
		ZL 250 A-DSC AIArray Black	1010-0002



The vertical dispersion characteristics of the line arrays can be set using our new **LB AUDIO CONTROL Software**.



LB AUDIO CONTROL

Browser-based Software
for our new DSPs
Interface: Ethernet
Download
www.lb-lautsprecher.de



PA Series

DSP power amplifiers for driving the passive multi channel line arrays starting on page 43

ib PA SPEAKERS

Universal **PA speakers** for the professional user. All models offer precise acoustic dispersion with a constant beam width and are optimized for a high sound pressure level with a balanced sound. The speaker systems offer precise tonal balance so that they can be perfectly combined in complex PA systems for constant sound transmission in larger listening areas.

The line array module F 208 with its patented AIArray® technology is equipped with a high-frequency array with a switchable dispersion angle of 120° x 10° or 120° x 30°. This allows the throw to be adjusted to the respective acoustic situation. Speakers can be operated individually or as a line array with two to four elements.



F 208 AIArray

The line array module with patented AIArray technology features a dispersion pattern that can be switched from 120° x 10° to 120° x 30°



Harry Klein Munich
F 8 A active DJ monitor speakers



Freilichtbühne
St. Martin in Passeier
South Tyrol
PA system with line arrays



Crowns Club Munich, 48 channel PA system



B 212 B Subwoofer

Double-vented bandpass subwoofer for maximum output with small dimensions



PA Speakers

Model

Item no.

F 8	Compact 2-way PA speaker 8" + 1", dispersion angle (H x V) 80° x 80° Power capacity RMS/program 250 / 500 watts, impedance 8 ohms Dimensions (W x H x D) 250 x 400 x 270 mm Multi-purpose cabinet, black textured varnish, steel grille	F 8 Black	1408-0001
F 8 A	2-way active speaker, power 400 watts + 80 watts XLR and PowerCon connectors, switchable high-pass filter and ground lift	F 8 A Black	1408-0002
UB 8	U-bracket for F 8 incl. mounting accessories, powder-coated, black	UB 8 Black	7114-0013
UB 8 Q	U-bracket for F 8, horizontal mounting, incl. mounting accessories, powder-coated, black	UB 8 Q Black	7114-0014
WH 350	Rotatable/pivotable wall-mount, suitable for F 8	WH 350 Black	7114-0029
F 10	Compact 2-way PA speaker 10" + 1" , dispersion angle (H x V) 80° x 60° Power capacity RMS/program 300/600 watts, impedance 8 ohms Dimensions (W x H x D) 320 x 520 x 340 mm Multi-purpose cabinet, black textured varnish, steel grille	F 10 Black	1409-0001
F 10 A	2-way active speaker, power 400 watts + 80 watts XLR and PowerCon connectors, switchable high-pass filter and ground lift	F 10 A Black	1409-0002
UB 10	U-bracket for F 10 incl. mounting accessories, powder-coated, black	UB 10 Black	7114-0015
UB 10 Q	U-bracket for F 10, horizontal mounting, incl. mounting accessories, powder-coated, black	UB 10 Q Black	7114-0016
WH 400	Rotatable/pivotable wall-mount, suitable for F 10	WH 400 Black	7114-0031
F 12	2-way high-power PA speaker 12" + 1.4", dispersion angle (H x V) 80° x 60° Power capacity RMS/program 500 / 1000 watts, impedance 8 ohms Dimensions (W x H x D) 380 x 640 x 360 mm Multi-purpose cabinet, black textured varnish, steel grille	F 12 Black	1410-0001
UB 12	U-bracket for F 12 incl. mounting accessories, powder-coated, black	UB 12 Black	7114-0017
UB 12 Q	U-bracket for F 12, horizontal mounting, incl. mounting accessories, powder-coated, black	UB 12 Q Black	7114-0018



PA Speakers

Model

Item no.

F 15	2-way high-power PA speaker 15" + 1.4", dispersion angle (H x V) 80° x 60° Power capacity RMS/program 500 / 1000 watts, impedance 8 ohms Dimensions (W x H x D) 440 x 720 x 420 mm Multi-purpose cabinet, black textured varnish, steel grille	F 15 Black	1411-0001
UB 15	U-bracket for F 15 incl. mounting accessories, powder-coated, black	UB 15 Black	7114-0019
UB 15 Q	U-bracket for F 15, horizontal mounting, incl. mounting accessories, powder-coated, black	UB 15 Q Black	7114-0020

T 212	2-way high-power PA speaker 2 x 12" + 1,4" with high acoustic pressure Dispersion angle (H x V) 60° x 50° Power capacity RMS/program 1000 / 2000 watts, impedance 4 ohms Dimensions (W x H x D) 500 x 960 x 550 mm Multi-purpose cabinet, rigging tracks black textured varnish, steel grille	T 212 Black	1412-0001
UB 212	U-bracket for T 212 incl. mounting accessories, powder-coated, black	UB 212 Black	7114-0021



The **line array module F 208** with its patented **AIArray® technology** is equipped with a high-frequency array with a switchable dispersion angle of 120° x 10° or 120° x 30°. This allows the throw to be adjusted to the respective sound environment. Speakers can be operated individually or as a line array with two to four elements.



Line Array PA Speaker with Switchable Dispersion Angle

Model

Item no.

F 208 AIArray 2-way PA Speaker 2 x 8" + 6 x 1" with AIArray technology and rotatable horn
 Switchable dispersion angle(H x V) 120° x 10° / 120° x 30°
 Power capacity RMS/program 400 / 800 watts, impedance 8 ohms
 Dimensions (W x H x D) 270 x 520 x 380 mm
 Multi-purpose cabinet, black textured varnish, steel grille

F 208 AIArray Black

1413-0001



UB 208 U-bracket for F 208 incl. mounting accessories, powder-coated, black

UB 208 Black

7114-0022



UB 208 Q U-bracket for F 208, horizontal mounting, incl. mounting accessories powder-coated, black

UB 208 Q Black

7114-0023

MS 208 Mounting set to connect two F 208 modules in line arrays
 Powder-coated, black

MS 208 Black

7114-0024



Further mounting accessories on request

Rigging frame

FR 208 Rigging frame for line arrays consisting of 2 – 4 x F 208 AIArray

FR 208





7114-0025



We will be happy to assist you!

PA-Subwoofer

The PA series are **heavy-duty subwoofers** that can be combined with our PA speakers and line arrays. They are designed for high sound pressure levels and continuous operation at maximum power. The new models B 12 B and B 212 B have been developed for an optimal ratio of sound pressure to size.

	PA-Subwoofer	Model	Item no.
	B 12 B Compact bandpass subwoofer 12" long excursion driver, impedance 8 ohms Power capacity RMS/program 500/1000 watts Dimensions (W x H x D) 430 x 300 x 400 mm Textured varnish, black, rubber feet, recessed handles	B 12 B Black	1422-0001
	B 212 B Compact bandpass subwoofer 2 x 12" long excursion driver, impedance 4 ohms Power capacity RMS/program 1000/2000 watts Dimensions (W x H x D) 380 x 640 x 580 mm Textured varnish, black, rubber feet, recessed handles	B 212 B Black	1423-0001
	B 18 B Bandpass subwoofer 18" long excursion driver, impedance 8 ohms Power capacity RMS/program 700 / 1400 watts Dimensions (W x H x D) 540 x 900 x 620 mm Textured varnish, black, rubber feet, recessed handles	B 18 B Black	1425-0001
	B 218 High-performance subwoofer 2 x 18" long excursion driver, impedance 4 ohms Power capacity RMS/program 1400/2800 watts Dimensions (W x H x D) 600 x 1200 x 720 mm Textured varnish, black, rubber feet, recessed handles Front grille	B 218 Black	1426-0001



AMPLIFIER AND CONTROLLER AND ACCESSORIES

To control our speakers, we offer a comprehensive series of amplifiers and controllers that harmonize perfectly with our speakers and enable optimally tailored PA systems with maximum operational reliability. We develop and produce **compact amplifiers** as well as **multichannel 19" power amplifiers** with two to eight channels and output power of 50 to 800 watts per channel. All amplifier models are available with or without DSP.

The 19" power amplifiers can be fitted with one or two input modules for analog input signals and/or **Dante audio networks**. Our newly developed, browser-based **LB AUDIO CONTROL Software** is used to program and control amplifiers and controllers via Ethernet.

Our range is supplemented by a variety of accessories that can be used to meet specific requirements and implement particular operating concepts.

pa series

PA SD series
Compact amplifiers
with/without DSP



LB AUDIO CONTROL

Browser-based Software
for our new DSPs
Interface: Ethernet
Download
www.lb-lautsprecher.de

NEW

8-CHANNEL DANTE INTERFACE FOR PA SERIES



Dante™ The Dante interface features two RJ 45 ports for audio over Ethernet (primary/secondary). If the primary network connection fails, the module automatically switches to the secondary connection.

Intelligent
amplification.
High Tech
made in Munich



Deutsche Schule
Meran
PA system



Compact Amplifiers

Our **compact power amplifiers** with automatic on/off functionality and a standby contact are designed for decentralized installation (even in inaccessible locations) and for assembly in 19" racks. The PA 250 SD and PA 2100 SD models are additionally fitted with symmetrical inputs, bridge switches, switchable high-pass filters, and VCA inputs. They can be regulated using the WP-V and RP-V volume regulation panels or by means of the DV module and up/down contacts.



Compact Amplifiers

		Model	Item no.
PA 230	Compact 2-channel amplifier with Auto-On/Off 2 × 30 W / 4 ohms, 2 × 20 W/8 ohms Dimensions (W × H × D) 110 × 43 × 220 mm, ¼ 19", 1 U	PA 230	3001-0001
PA 250 SD	Remote-controllable digital 2-channel amplifier with Auto-On/Off 2 × 50 W/4 ohms, 2 × 40 W/8 ohms, 1 × 100 W/8 ohms, 1 × 140 W/4 ohms Dimensions (W × H × D) 110 × 43 × 220 mm, ¼ 19", 1 U	PA 250 SD	3002-0001
PA 2100 SD	Remote-controllable digital 2-channel amplifier with Auto-On/Off 2 × 100 W/4 ohms, 2 × 60 W/8 ohms, 1 × 200 W/8 ohms, 1 × 200 W/4 ohms Dimensions (W × H × D) 110 × 43 × 220 mm, ¼ 19", 1 U	PA 2100 SD	3002-0002

Compact Amplifiers with DSP

Compact power amplifiers with integrated **DSP**. The power amplifiers are programmed via Ethernet using our new **LB AUDIO CONTROL Software**. They are equipped with VCA inputs, enabling external volume control using our WP-V and RP-V volume control panels or using a DV module as well as automatic on/off functionality and a standby contact.



Compact Amplifiers with DSP

PA 250 S-DSC	Remote-controllable digital 2-channel amplifier with integrated DSP 2 × 50 W/4 ohms, 2 × 40 W/8 ohms, 1 × 100 W/8 ohms, 1 × 140 W/4 ohms Dimensions (W × H × D) 110 × 43 × 240 mm, ¼ 19", 1 U	PA 250 S-DSC	3003-0001
PA 2100 S-DSC	Remote-controllable digital 2-channel amplifier with integrated DSP 2 × 100 W/4 Ohm, 2 × 60 W/8 ohms, 1 × 200 W/8 ohms, 1 × 200 W/4 ohms Dimensions (W × H × D) 110 × 43 × 240 mm, ¼ 19", 1 U	PA 2100 S-DSC	3003-0002

19" Multi-Channel Amplifiers

Remote control **19" multichannel power amplifiers** with two to eight channels and output power of 100 to 800 watts per channel. These highly efficient power amplifiers deliver an outstanding sound with low heat build-up. The switchable automatic on/off functionality for each channel switches to an energy-saving Sleep mode when not receiving an input signal. The amplifiers can be equipped with a second input module such as the **Dante interface** to process mixed signal types. They are equipped with VCA inputs for external volume control as well as contacts for remote activation and fault signalling.

 paseries

19" Multi-Channel Amplifiers

Model

Item no.



PA 2100 2× Line In Sym., 2×100W/2–8 ohms, 1 U
2× Line In Cinch
2× In Dante-Module

PA 2100 3106-0001
PA 2100 CINCH 3106-0002
PA 2100 DANTE 3106-0003



PA 4100 4× Line In Sym., 4×100W/2–8 ohms, 1 U
4× Line In Cinch
4× In Dante-Module

PA 4100 3106-0004
PA 4100 CINCH 3106-0005
PA 4100 DANTE 3106-0006



PA 6100 6× Line In Sym., 6×100W/2–8 ohms, 1 U
6× Line In Cinch
6× In Dante-Module

PA 6100 3106-0007
PA 6100 CINCH 3106-0008
PA 6100 DANTE 3106-0009



PA 8100 8× Line In Sym., 8×100W/2–8 ohms, 1 U
8× Line In Cinch
8× In Dante-Module

PA 8100 3106-0010
PA 8100 CINCH 3106-0011
PA 8100 DANTE 3106-0012



PA 2200 2× Line In Sym., 2×200W/2–8 ohms, 1 U
2× Line In Cinch
2× In Dante-Module

PA 2200 3106-0013
PA 2200 CINCH 3106-0014
PA 2200 DANTE 3106-0015



PA 4200 4× Line In Sym., 4×200W/2–8 ohms, 1 U
4× Line In Cinch
4× In Dante-Module

PA 4200 3106-0016
PA 4200 CINCH 3106-0017
PA 4200 DANTE 3106-0018



PA 6200 6× Line In Sym., 6×200W/2–8 ohms, 1 U
6× Line In Cinch
6× In Dante-Module

PA 6200 3106-0019
PA 6200 CINCH 3106-0020
PA 6200 DANTE 3106-0021



PA 8200 8× Line In Sym., 8×200W/2–8 ohms, 1 U
8× Line In Cinch
8× In Dante-Module

PA 8200 3106-0022
PA 8200 CINCH 3106-0023
PA 8200 DANTE 3106-0024

19" Multi-Channel Amplifiers



PA 2400 2 × Line In Sym., 2 × 400 W / 2–8 ohms, 1 U
2 × Line In Cinch
2 × In Dante-Module

Model

Item no.

PA 2400 3106-0025
PA 2400 CINCH 3106-0026
PA 2400 DANTE 3106-0027



PA 4400 4 × Line In Sym., 4 × 400 W / 2–8 ohms, 1 U
4 × Line In Cinch
4 × In Dante-Module

PA 4400 3106-0028
PA 4400 CINCH 3106-0029
PA 4400 DANTE 3106-0030



PA 6400 6 × Line In Sym., 6 × 400 W / 2–8 ohms, 2 U
6 × Line In Cinch
6 × In Dante-Module

PA 6400 3106-0031
PA 6400 CINCH 3106-0032
PA 6400 DANTE 3106-0033



PA 8400 8 × Line In Sym., 8 × 400 W / 2–8 ohms, 2 U
8 × Line In Cinch
8 × In Dante-Module

PA 8400 3106-0034
PA 8400 CINCH 3106-0035
PA 8400 DANTE 3106-0036



PA 2800 2 × Line In Sym., 2 × 800 W / 2-4 ohms 2 × 400 W / 8 ohms, 1 U
2 × Line In Cinch
2 × In Dante-Module

PA 2800 3106-0037
PA 2800 CINCH 3106-0038
PA 2800 DANTE 3106-0039



PA 4800 4 × Line In Sym., 4 × 800 W / 2-4 ohms 4 × 400 W / 8 ohms, 2 U
4 × Line In Cinch
4 × In Dante-Module

PA 4800 3106-0040
PA 4800 CINCH 3106-0041
PA 4800 DANTE 3106-0042



PA 6800 6 × Line In Sym., 6 × 800 W / 2-4 ohms 6 × 400 W / 8 ohms, 2 U
6 × Line In Cinch
6 × In Dante-Module

PA 6800 3106-0043
PA 6800 CINCH 3106-0044
PA 6800 DANTE 3106-0045



PA 8800 8 × Line In Sym., 8 × 100 W / 2–8 ohms, 8 × 800 W / 2-4 ohms 8 × 400 W / 8 ohms, 2 U
8 × Line In Cinch
8 × In Dante-Module

PA 8800 3106-0046
PA 8800 CINCH 3106-0047
PA 8800 DANTE 3106-0048

19" Multi-Channel Amplifiers with DSP

Amplifier series with integrated **8x8 DSP**. All models have eight symmetrical inputs and a total of eight outputs. Depending on the model, two to eight outputs are configured as power amplifier channels with 100 watts of output power. The remaining outputs are available as symmetrical line outputs. The amplifiers can be programmed via Ethernet using our newly developed, browser-based **LB AUDIO CONTROL Software**. They can be equipped with a second input module such as the Dante interface to process mixed signal types and are equipped with VCA inputs for external volume control as well as contacts for remote On/Off and Fault.

 pa series

19" Multi-Channel Amplifiers with DSP

Model

Item no.



PA 2100 DSC 8 × Line In Sym., 2 × 100W/2–8 ohms, 6 × Line Out, 1 U
8 × Line In Cinch
8 × In Dante-Module

PA 2100 DSC 3106-0049
PA 2100 DSC CINCH 3106-0050
PA 2100 DSC DANTE 3106-0051



PA 4100 DSC 8 × Line In Sym., 4 × 100W/2–8 ohms, 4 × Line Out, 1 U
8 × Line In Cinch
8 × In Dante-Module

PA 4100 DSC 3106-0052
PA 4100 DSC CINCH 3106-0053
PA 4100 DSC DANTE 3106-0054



PA 6100 DSC 8 × Line In Sym., 6 × 100W/2–8 ohms, 2 × Line Out, 1 U
8 × Line In Cinch
8 × In Dante-Module

PA 6100 DSC 3106-0055
PA 6100 DSC CINCH 3106-0056
PA 6100 DSC DANTE 3106-0057



PA 8100 DSC 8 × Line In Sym., 8 × 100W/2–8 ohms, 1 U
8 × Line In Cinch
8 × In Dante-Module

PA 8100 DSC 3106-0058
PA 8100 DSC CINCH 3106-0059
PA 8100 DSC DANTE 3106-0060



PA 2200 DSC 8 × Line In Sym., 2 × 200W/2–8 ohms, 6 × Line Out, 1 U
8 × Line In Cinch
8 × In Dante-Module

PA 2200 DSC 3106-0061
PA 2200 DSC CINCH 3106-0062
PA 2200 DSC DANTE 3106-0063



PA 4200 DSC 8 × Line In Sym., 4 × 200W/2–8 ohms, 4 × Line Out, 1 U
8 × Line In Cinch
8 × In Dante-Module

PA 4200 DSC 3106-0064
PA 4200 DSC CINCH 3106-0065
PA 4200 DSC DANTE 3106-0066



PA 6200 DSC 8 × Line In Sym., 6 × 200W/2–8 ohms, 2 × Line Out, 1 U
8 × Line In Cinch
8 × In Dante-Module

PA 6200 DSC 3106-0067
PA 6200 DSC CINCH 3106-0068
PA 6200 DSC DANTE 3106-0069



PA 8200 DSC 8 × Line In Sym., 8 × 200W/2–8 ohms, 1 U
8 × Line In Cinch
8 × In Dante-Module

PA 8200 DSC 3106-0070
PA 8200 DSC CINCH 3106-0071
PA 8200 DSC DANTE 3106-0072

19" Multi-Channel Amplifiers with DSP



PA 2400 DSC 8× Line In Sym., 2×400W/2–8 ohms, 6× Line Out, 1 U
8× Line In Cinch
8× In Dante-Module

Model

Item no.

PA 2400 DSC 3106-0073
PA 2400 DSC CINCH 3106-0074
PA 2400 DSC DANTE 3106-0075



PA 4400 DSC 8× Line In Sym., 4×400W/2–8 ohms, 4× Line Out, 1 U
8× Line In Cinch
8× In Dante-Module

PA 4400 DSC 3106-0076
PA 4400 DSC CINCH 3106-0077
PA 4400 DSC DANTE 3106-0078



PA 6400 DSC 8× Line In Sym., 6×400W/2–8 ohms, 2× Line Out, 2 U
8× Line In Cinch
8× In Dante-Module

PA 6400 DSC 3106-0079
PA 6400 DSC CINCH 3106-0080
PA 6400 DSC DANTE 3106-0081



PA 8400 DSC 8× Line In Sym., 8×400W/2–8 ohms, 2 U
8× Line In Cinch
8× In Dante-Module

PA 8400 DSC 3106-0082
PA 8400 DSC CINCH 3106-0083
PA 8400 DSC DANTE 3106-0084



PA 2800 DSC 8× Line In Sym., 2×800W/2-4 ohms, 6× Line Out, 1 U
8× Line In Cinch
8× In Dante-Module

PA 2800 DSC 3106-0085
PA 2800 DSC CINCH 3106-0086
PA 2800 DSC DANTE 3106-0087



PA 4800 DSC 8× Line In Sym., 4×800W/2-4 ohms, 4× Line Out, 2 U
8× Line In Cinch
8× In Dante-Module

PA 4800 DSC 3106-0088
PA 4800 DSC CINCH 3106-0089
PA 4800 DSC DANTE 3106-0090



PA 6800 DSC 8× Line In Sym., 6×800W/2-4 ohms, 2× Line Out, 2 U
8× Line In Cinch
8× In Dante-Module

PA 6800 DSC 3106-0091
PA 6800 DSC CINCH 3106-0092
PA 6800 DSC DANTE 3106-0093



PA 8800 DSC 8× Line In Sym., 8×800W/2-4 ohms, 2 U
8× Line In Cinch
8× In Dante-Module

PA 8800 DSC 3106-0094
PA 8800 DSC CINCH 3106-0095
PA 8800 DSC DANTE 3106-0096

SMART BACK SIDES

The power amplifiers feature two rear slots for two input modules, each with two to eight channels. They can be equipped with symmetrical line inputs, cinch inputs or a Dante interface (also in combination). This allows different signal types and signal combinations to be processed. DIP switches can be used to switch the automatic on/off functionality, input sensitivity, and parallel and bridge mode separately for all channels. VCA inputs per chan-

nel enable external volume control. The amplifiers can be switched on or off via a contact.



Slots for two Input Modules

Input Modules

Input modules with two to eight channels for our 19" power amplifiers in the new PA series. The modules are available with symmetrical line inputs or asymmetrical cinch inputs. All modules are equipped with DIP switches for ground lift on each channel pair and can be configured for use with grounded or non-grounded signal sources.



Input Module	Model	Item no.
2xIN-SYM Input-Module 2 x Line In, symmetrical, pluggable screwtype terminals	2xIN-SYM	3108-0001
4xIN-SYM Input-Module 4 x Line In, symmetrical, pluggable screwtype terminals	4xIN-SYM	3108-0002
6xIN-SYM Input-Module 6 x Line In, symmetrical, pluggable screwtype terminals	6xIN-SYM	3108-0003
8xIN-SYM Input-Module 8 x Line In, symmetrical, pluggable screwtype terminals	8xIN-SYM	3108-0004
2xIN-CINCH Input-Module 2 x Line In, asymmetrical, Cinch connectors	2xIN-CINCH	3108-0005
4xIN-CINCH Input-Module 4 x Line In, asymmetrical, Cinch connectors	4xIN-CINCH	3108-0006
6xIN-CINCH Input-Module 6 x Line In, asymmetrical, Cinch connectors	6xIN-CINCH	3108-0007
8xIN-CINCH Input-Module 8 x Line In, asymmetrical, Cinch connectors	8xIN-CINCH	3108-0008
Dante Input Module		
Interface for the multi-channel transmission of uncompressed digital audio signals with low latency via 100 Mbps or 1 Gbps Ethernet networks. Signal distribution is configured using the Dante Controller routing software.		
DANTE 8x8 Dante interface for Audio over Ethernet, 2 x RJ 45 (Primary/Secondary)	DANTE 8x8	3108-0009

Accessories for Amplifiers

Transformers for 100 V systems and external volume control for our amplifiers in the PA series.

 pa series



Accessories for Amplifiers

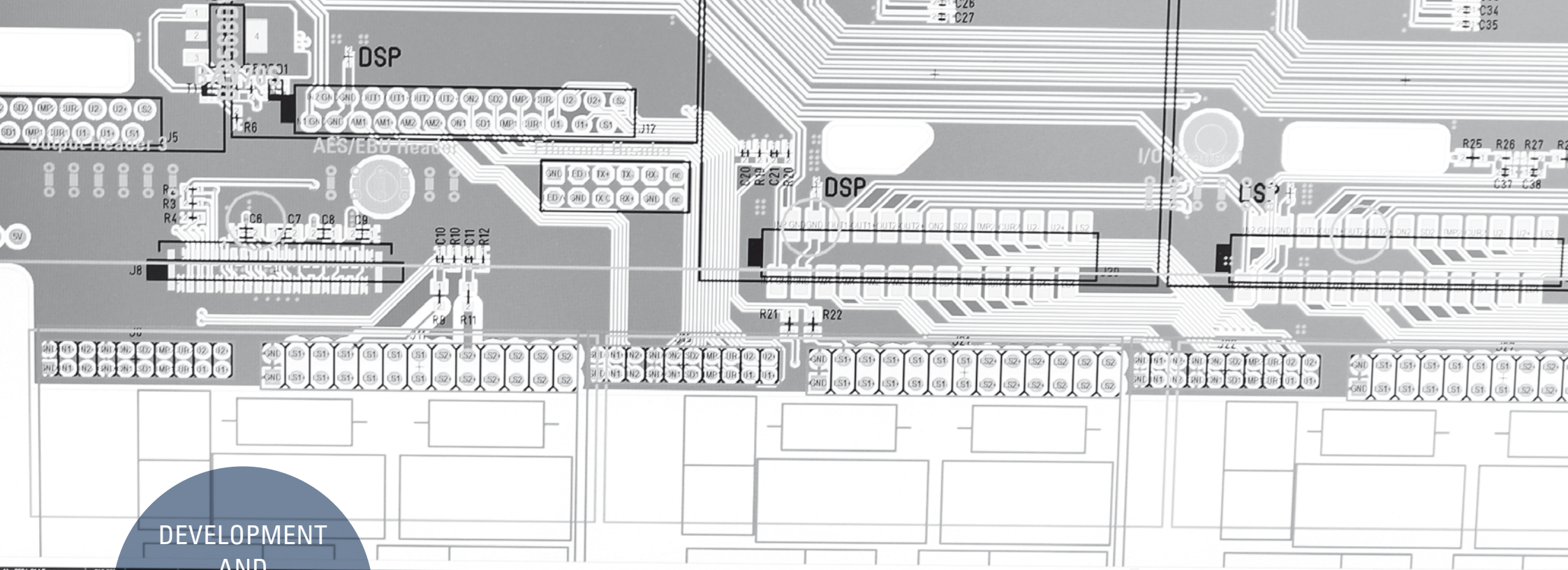
		Model	Item no.
PA-T 2050	100 V transformer module, 2 x 50 watts, torodial core	PA-T 2050	3109-0001
PA-T 100	100 V transformer module, 100 watts, torodial core	PA-T 100	3109-0002
PA-T 200	100 V transformer module, 200 watts, torodial core	PA-T 200	3109-0003
PA-T 400	100 V transformer module, 400 watts, torodial core	PA-T 400	3109-0004
PA-T 800	100 V transformer module, 800 watts, torodial core	PA-T 800	3109-0007
PA-T 1U	Rack cradle 1 U for 4 x PA 250 SD, 4 x PA 2100 SD or 4 x PA-T 2050	PA-T 1U	3109-0005
PA-T 2U	Rack cradle 2 U for 2 x PA-T 800	PA-T 2U	3109-0008
WP-V	Wall panel, volume control for power amplifiers of PA Series Regulation and On/Mute via VCA for surface boxes	WP-V	3401-0003
RP-V	Rack panel, volume control for power amplifiers of PA Series Regulation and On/Mute via VCA for 19" rack mount RP-1U	RP-V	3401-0004
WP-0 RP-0	Wall panel, blank panel Rack panel, blank panel	WP-0 RP-0	3401-0001 3402-0001
RP-1U	Rack mount 1 U for 6 x RP panel	RP-1U	3402-0016
DV-Modul	Digitale volume control, regulation with dual push buttons (Up/Down contacts) via VCA inputs	DV-Modul	3109-0006

System controllers for processing signals in multichannel PA systems. Our newly developed, browser-based **LB AUDIO CONTROL Software** offers ten fully parametric filters, a delay of up to two seconds, plus limiters and compressors for every input and output. The mixer matrix can be used to route the inputs to the various outputs as required. The controllers can be programmed via Ethernet and controlled using media control systems. We can also configure project-specific presets on request.

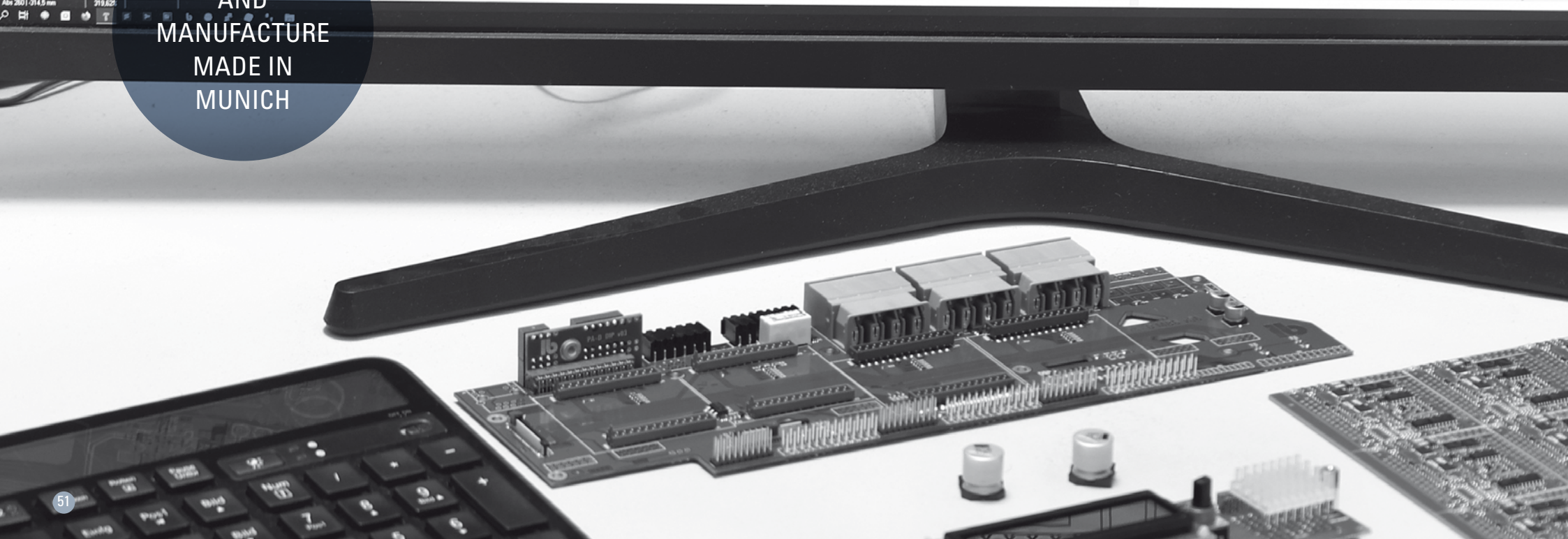
19" System Controllers



DSC 808	Digital system controller, 24 Bit, 48 kHz, 8 x Line IN sym., 8 x Line OUT sym. Interfaces: USB, Ethernet, 19", 1 U, LB AUDIO CONTROL Software	DSC 808	3301-0003
----------------	--	----------------	-----------



DEVELOPMENT
AND
MANUFACTURE
MADE IN
MUNICH



Customized Speakers

30 years experience in loudspeaker design and the development of countless customized models for special projects permit us to supply even small series for particular applications both within short time and at reasonable cost.

- Special dispersion-characteristics and designs
- Individual versions of cabinets and dimensions
- Special colors and particular surfaces
- 100 V versions of all kinds of loudspeakers
- Active or wireless versions of many loudspeakers
- EN 54-24 certified speakers



Directional speaker for installation in room corners



Translucent speakers in chandeliers



Miniature dodecahedron speaker for room acoustic measurements



Invisible built-in speaker system for digital signage



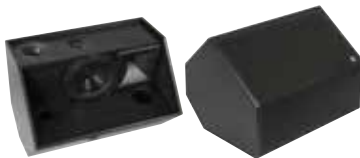
C 805 Flat cinema speaker



In-ceiling speaker with Polar[®] technology and closed back



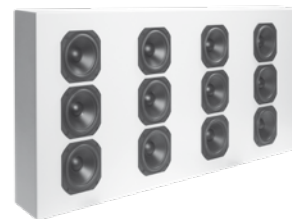
SUB 40 active subwoofer with Dante interface



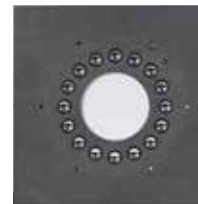
Front speaker F 10 with integrated monitor speaker F 6



Micro line array (30 mm width)



Flat on-wall subwoofer (backside)



Ring radiator for acoustic measurements



F 6 customized version

**LB Lautsprecher
und Beschallungstechnik GmbH**

info@lb-lautsprecher.de
www.lb-lautsprecher.de
www.feiner-hoeren.de

@LB_Audio_Components

Kapellenstr. 10 · 85622 Feldkirchen
Phone +49 89 1893 109-0 · Fax -29





Development and Production

We work closely with customers, planners and architects to develop our sophisticated speakers and amplifiers. Special designs, tailored sound dispersion characteristics and patented details are just some of the unique features that make our sound systems the perfect building blocks for multimedia installations and speech amplification systems.

All LB products are developed and manufactured in accordance with ISO 9001:2015. We work with regional suppliers and use the highest quality components. Designed with sustainability in mind, every part is long lasting and energy efficient. Our products are easy to maintain and service thanks to their modular design. We offer a five-year warranty on our products.



pure listening 

**LB Lautsprecher
und Beschallungstechnik GmbH**
info@lb-lautsprecher.de

www.lb-lautsprecher.de
www.feiner-hoeren.de
@LB_Audio_Components

Kapellenstr. 10 · 85622 Feldkirchen
Phone +49 89 1893109-0 · Fax -29